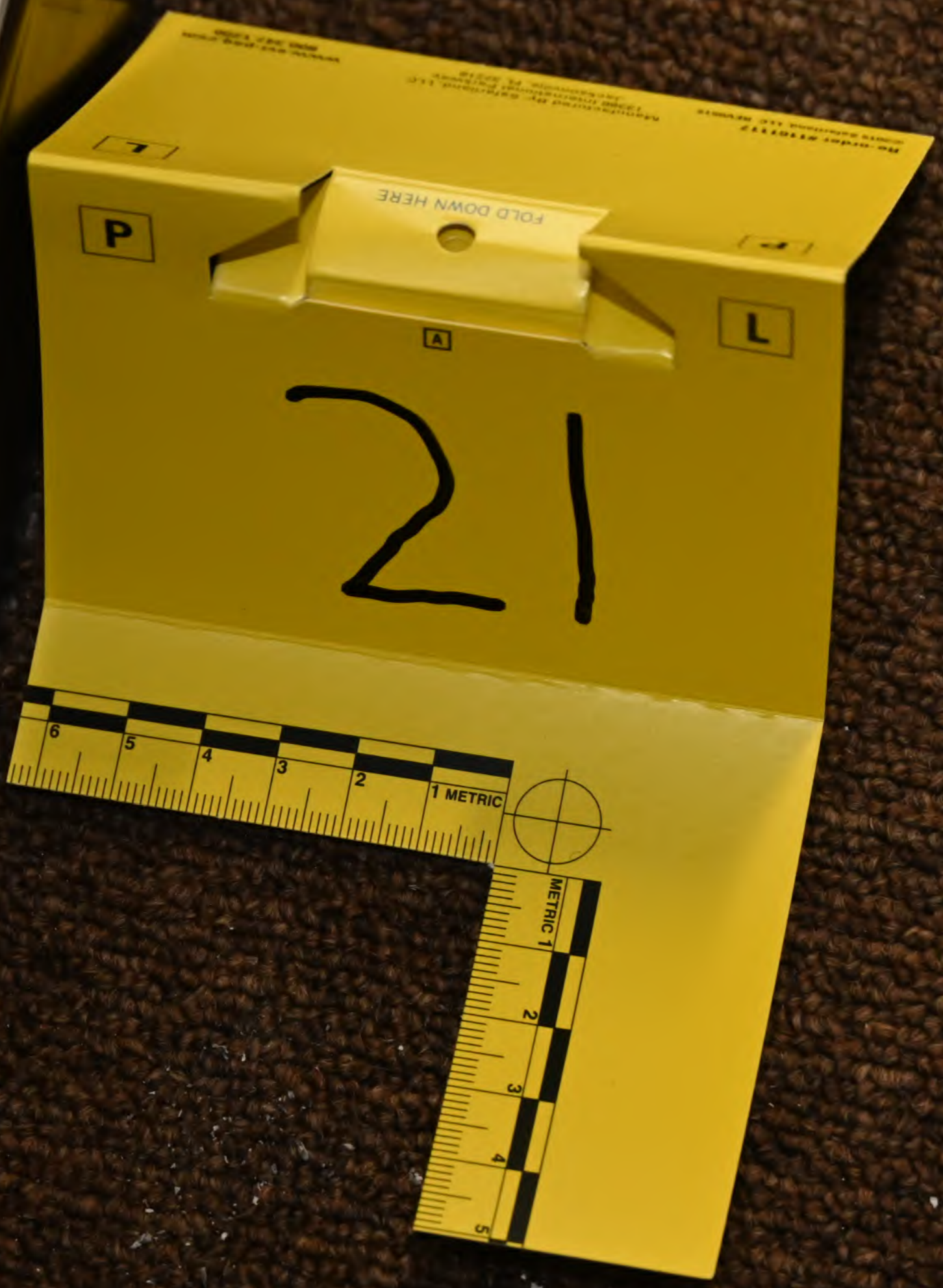


Handwritten black scribbles at the top of the page.

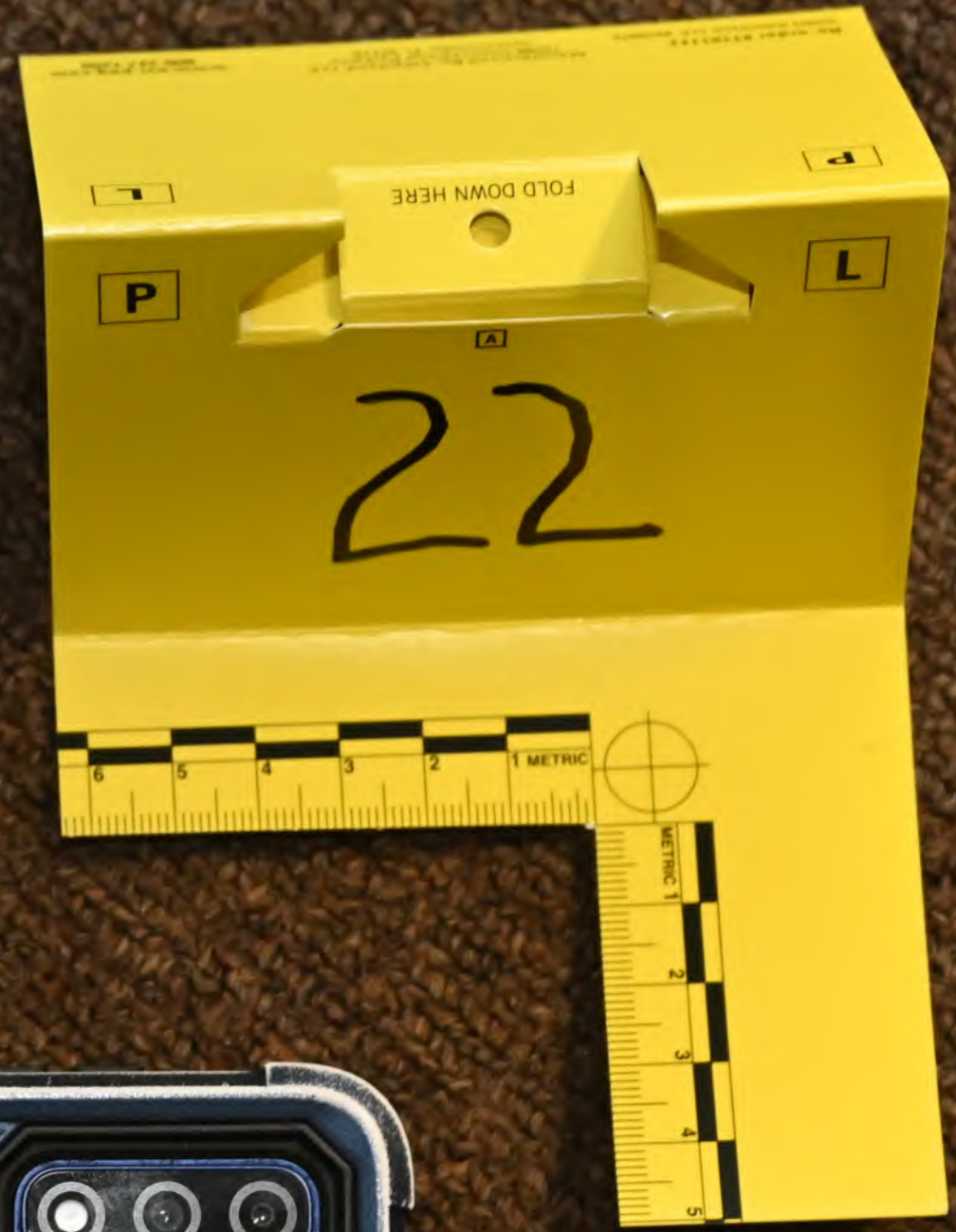


21





21



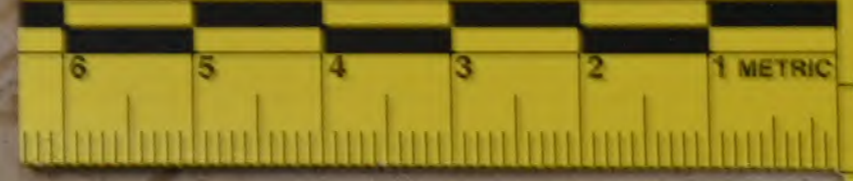


FOLD DOWN HERE

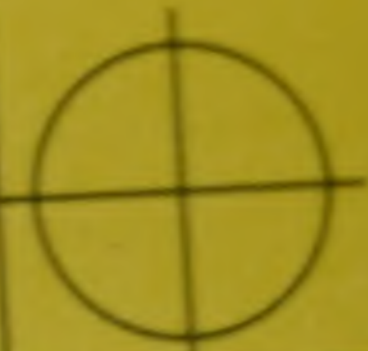
P

L

23



23





METRIC 1 2 3 4 5

BI 1.0

INCHES 1 2


No Smoking
In This
Building

55-28

55-33

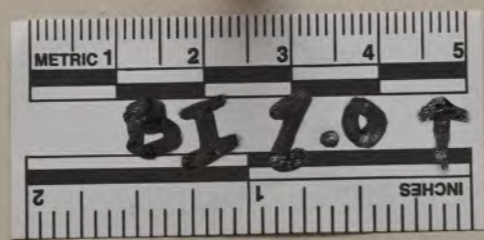
FIRE ALARM
LIFT
&
PULL

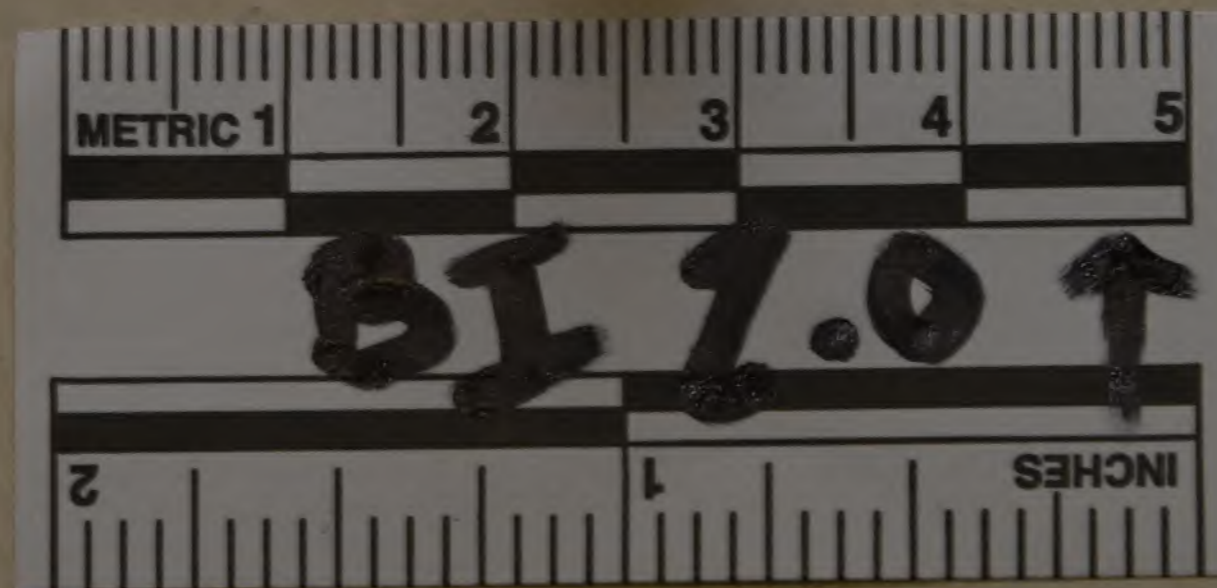
55-3



20

**No Smoking
In This
Building**





METRIC 1

2

3

4

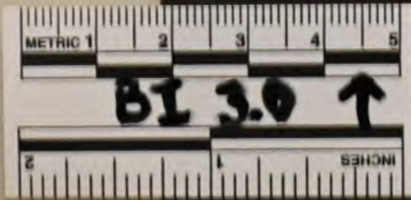
5

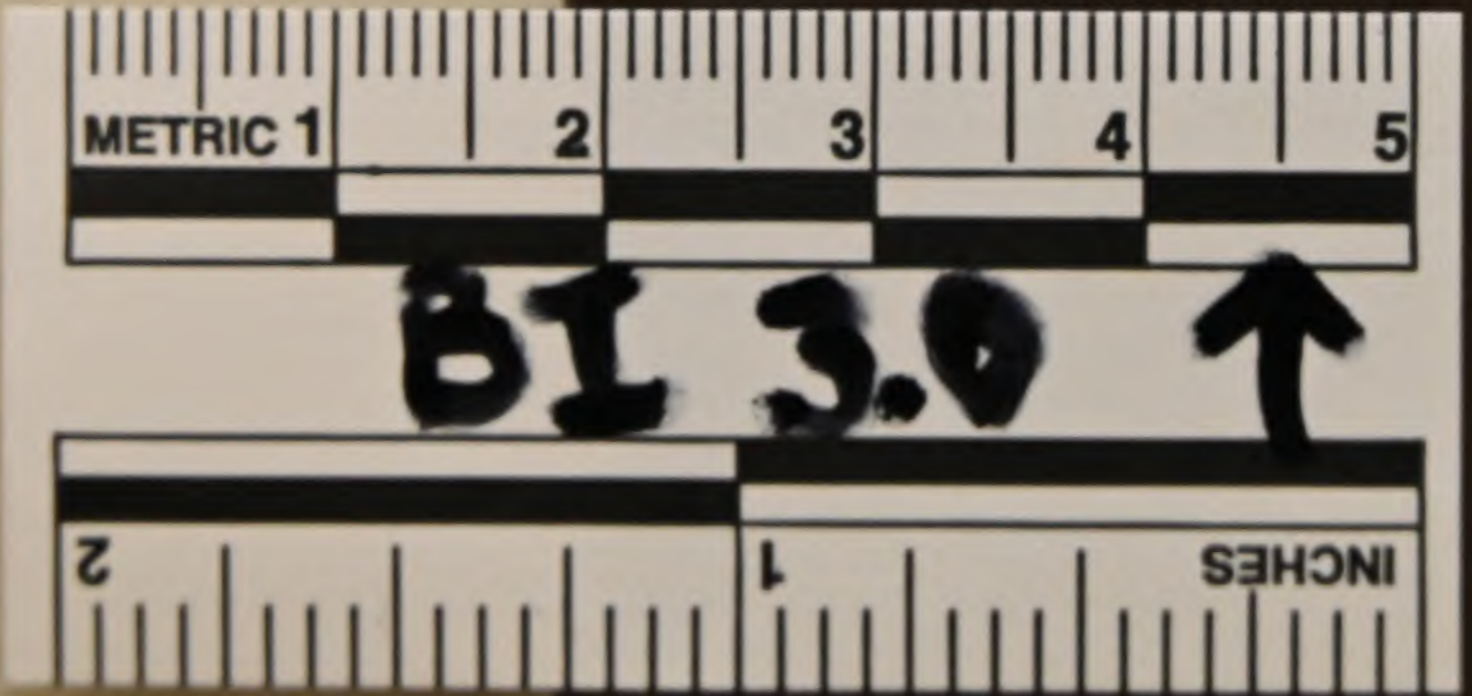
BI 1.0 ↑

2

1

INCHES





METRIC 1

2

3

4

5

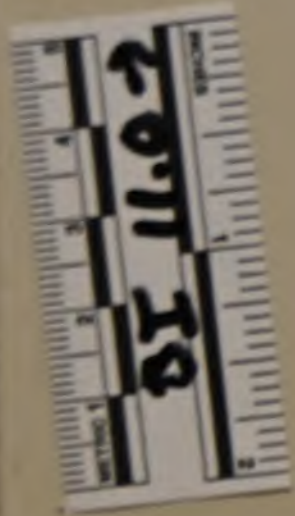
BI 3.0



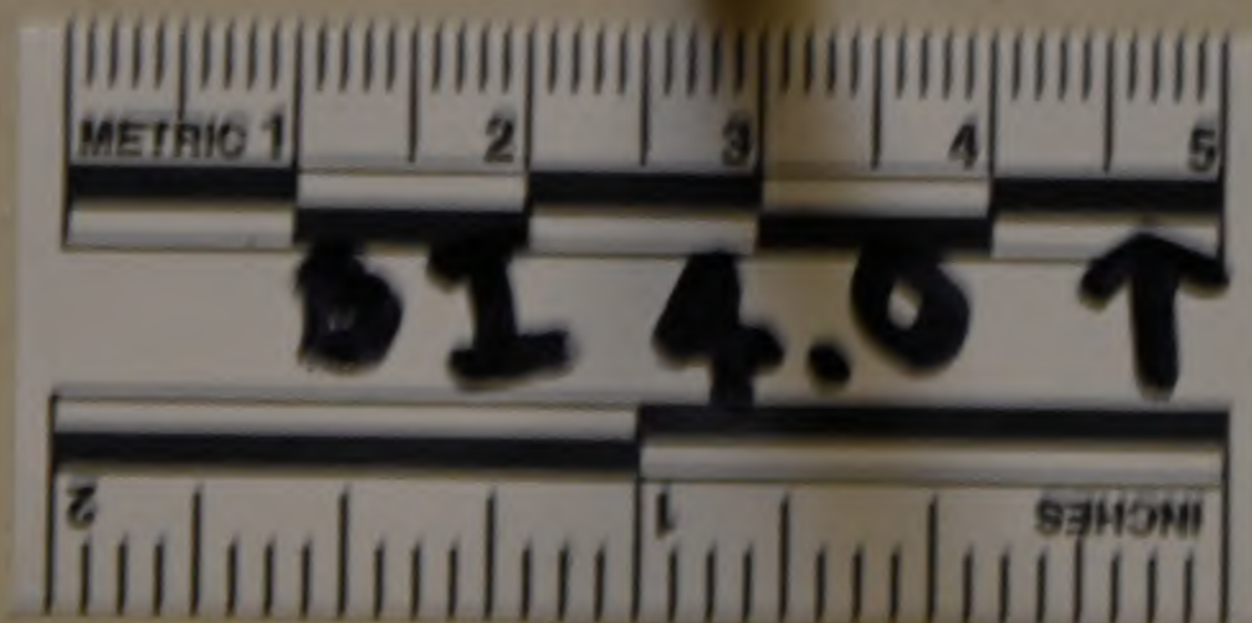
2

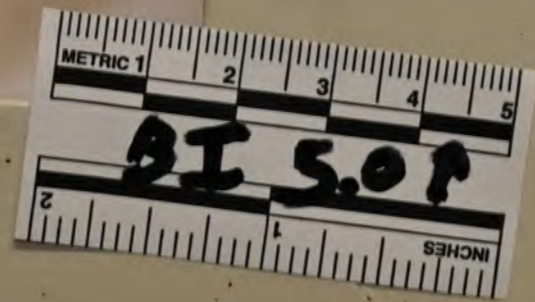
1

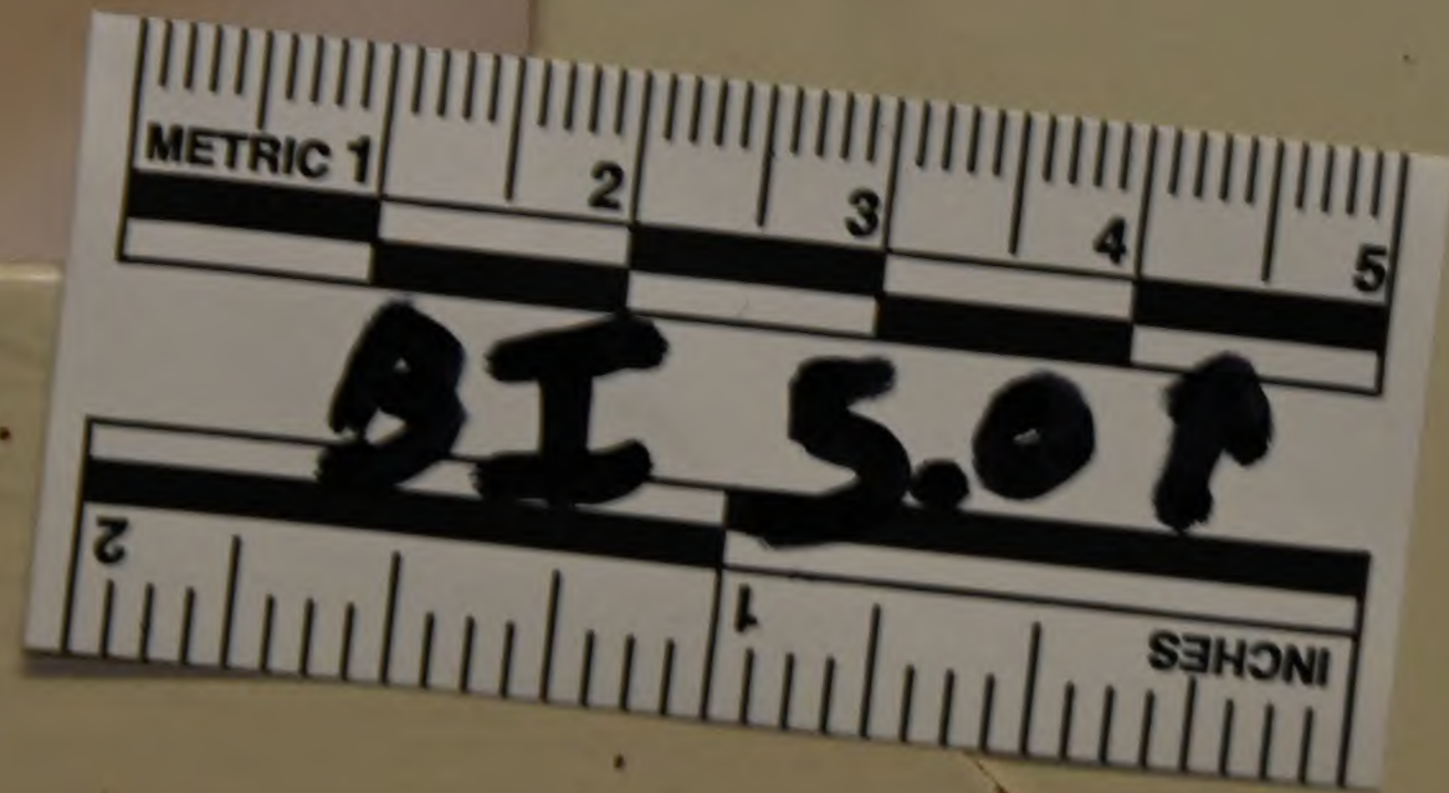
INCHES



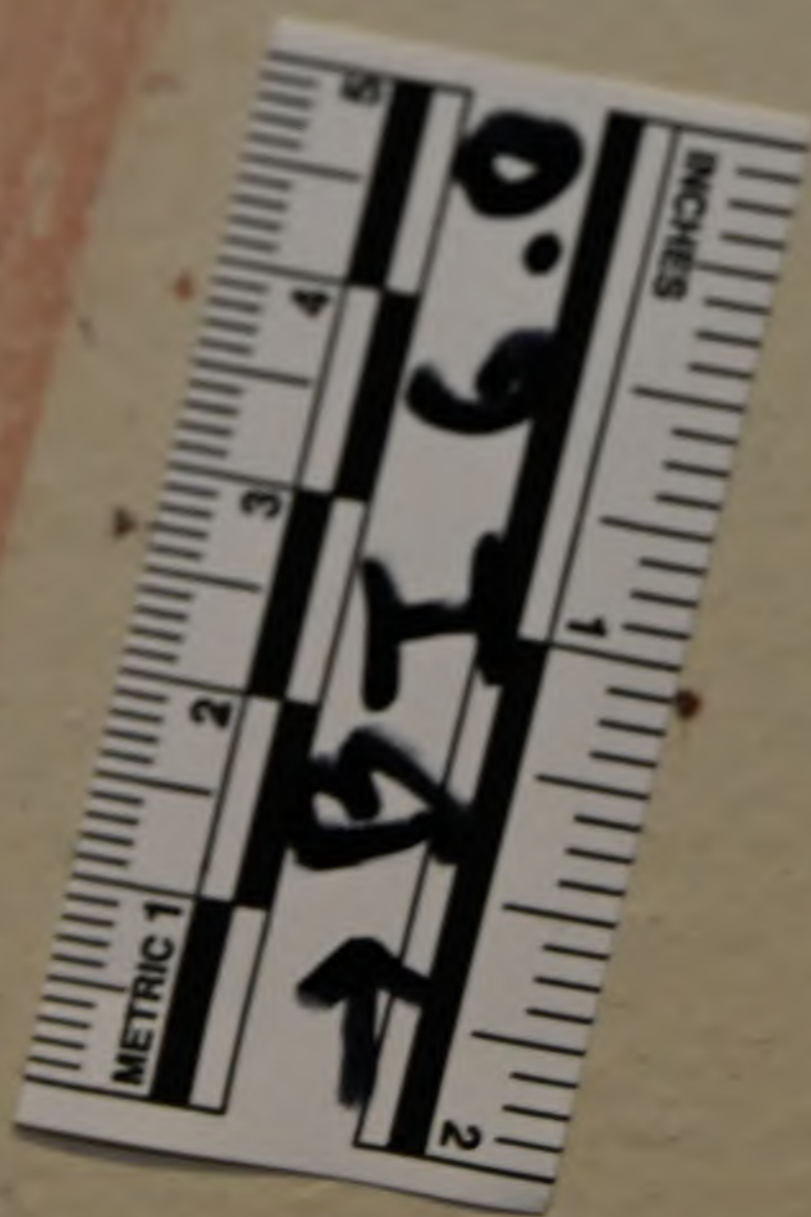








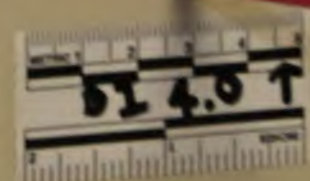








101102



INSTRUCTIONS

- 1. HOLD SPRING FULL RING FIR.
- 2. STAND BACK 10 FEET, AIM AT BASE OF FIRE.
- 3. PULL PIN, TILT NOZZLE, SQUEEZE LEVER, SWEEP SIDE TO SIDE.



AE SOP



101

101

101

101

101

101

101

101

There's no life HOME

101

