





F150

ROADIAN TR
MAXXEN



SHERIFF

PIRELLI

SCORPION STR

F50

1000



F500

Mustang
LEASURE TRUCKS

WIDEBEASS A7
D70

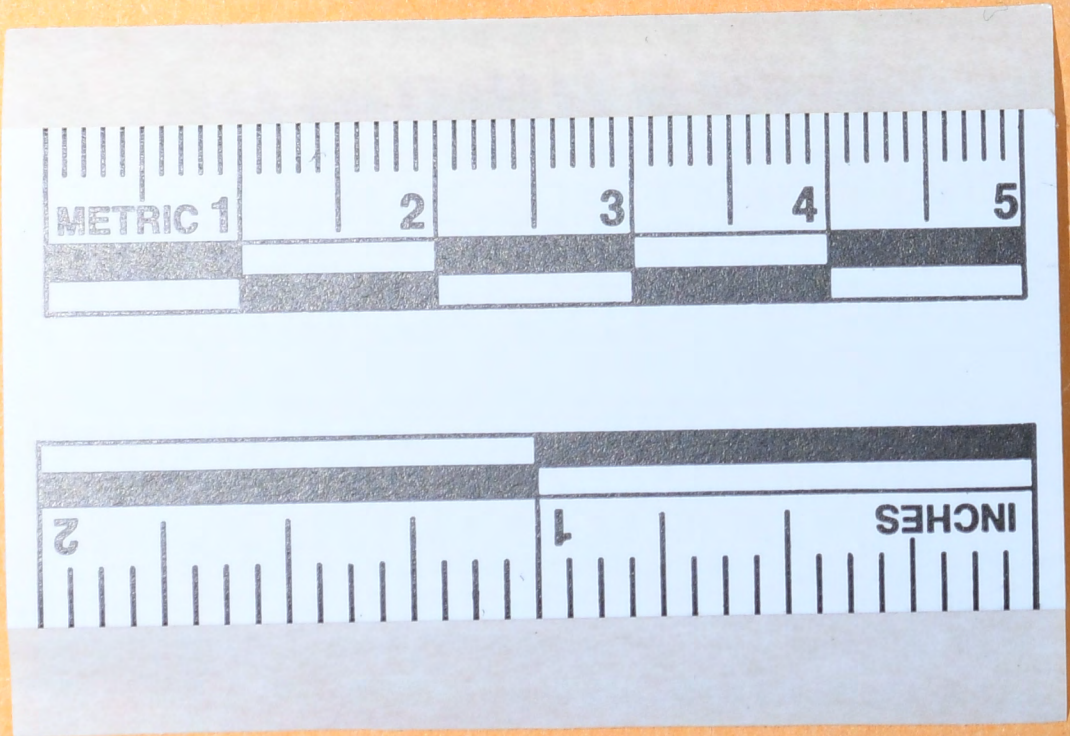








2





3



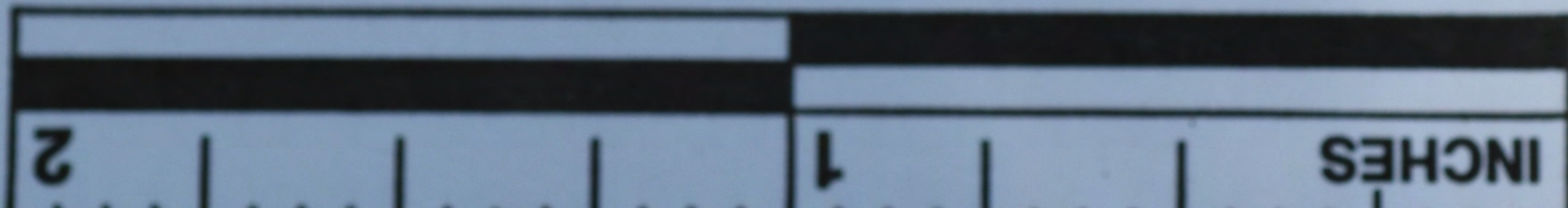
4







5





5.1



6



6





7



RELS / STAC

2





RUSSELL



88



88

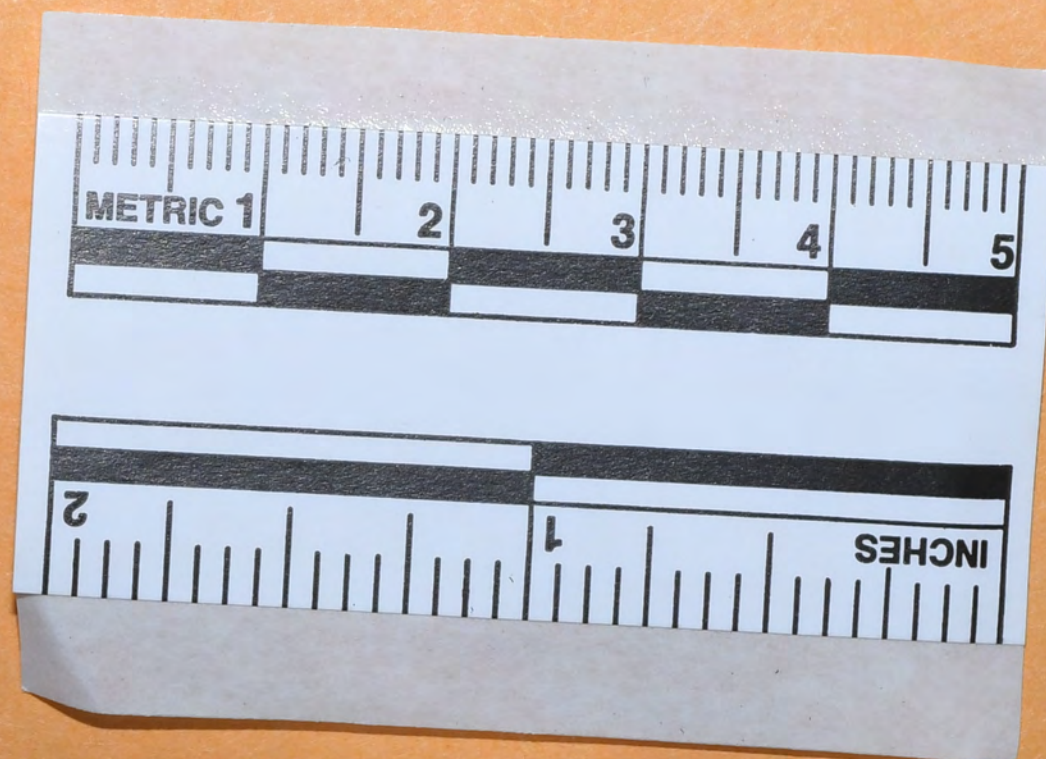


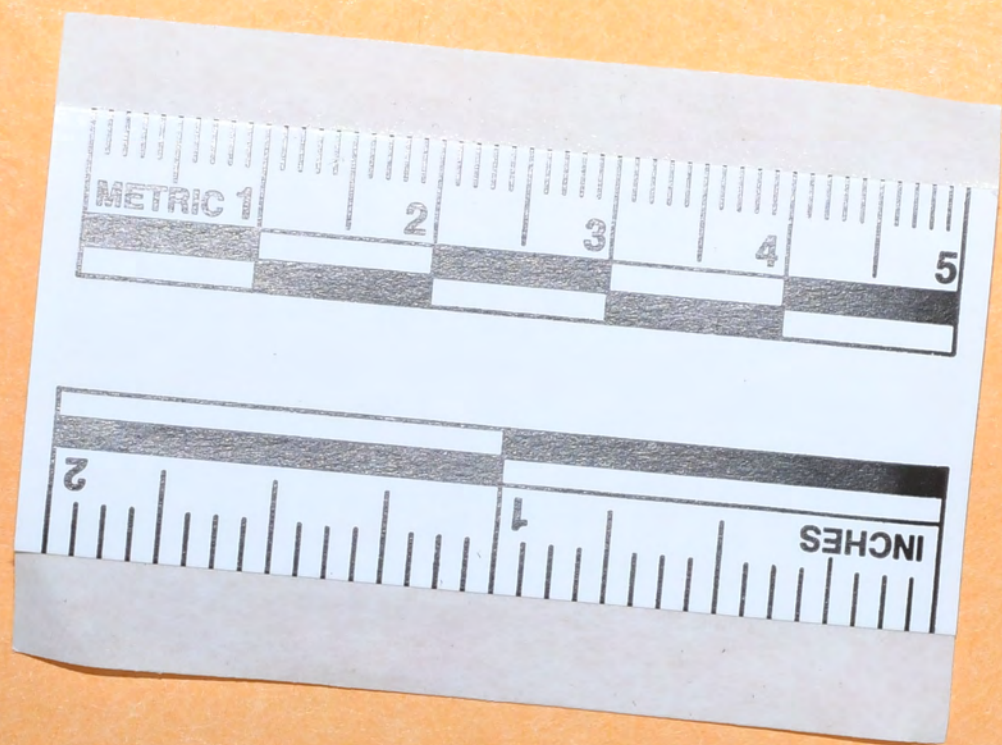
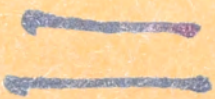
9

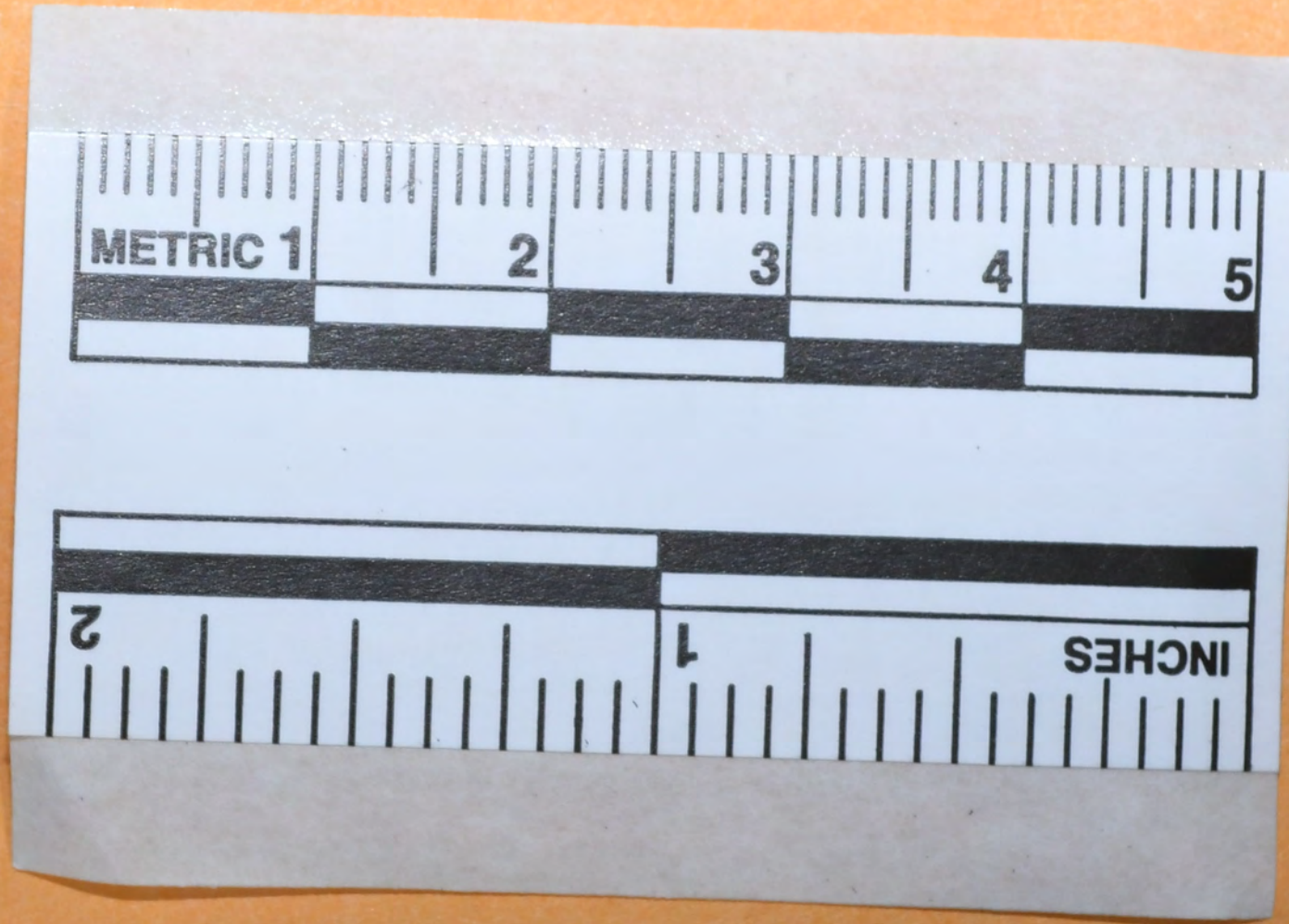
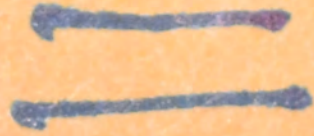




10









elbeco
BODYSHIELD

GOD
AND COUNTRY

PILOT G-2

PILOT G-2

12



elbeco
BODYSHIELD

600
AND COUNTRY

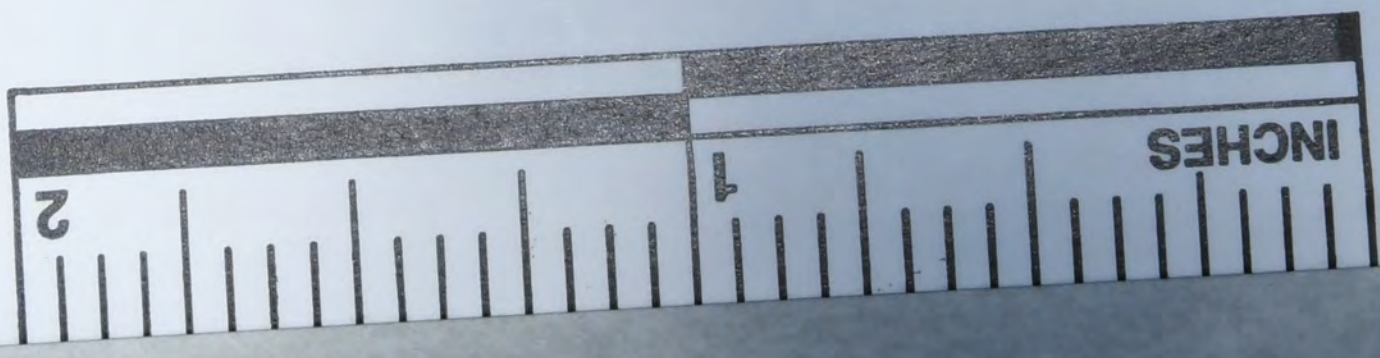
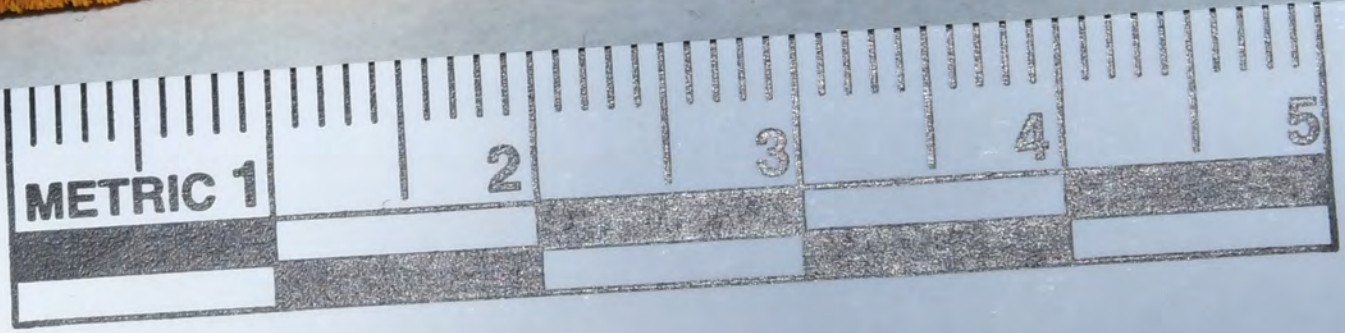
12

Micro

Micro

Micro





937-565-0829

419 303 4999

Broke position

IT

~~IT~~ on steps 1-4

on first set

Apart 1-4

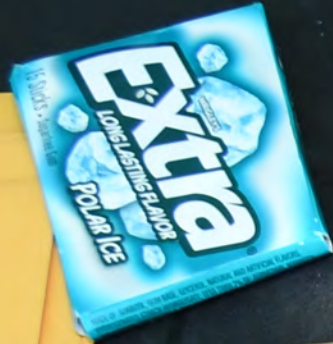
AT

Travis Patton

Charlot Patton

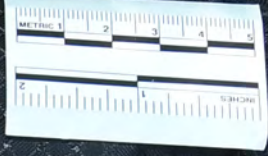
Charity Patton 10-11





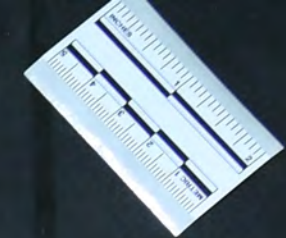
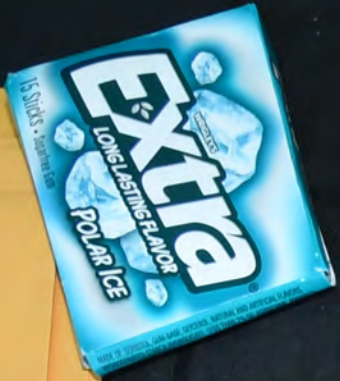
BODYSHIELD

GH
ARMOR SYSTEMS



12

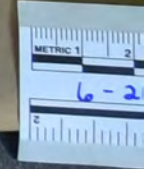




BODYSHIELD
Size: M
MADE IN VIETNAM

GH
ARMOR SYSTEMS

12





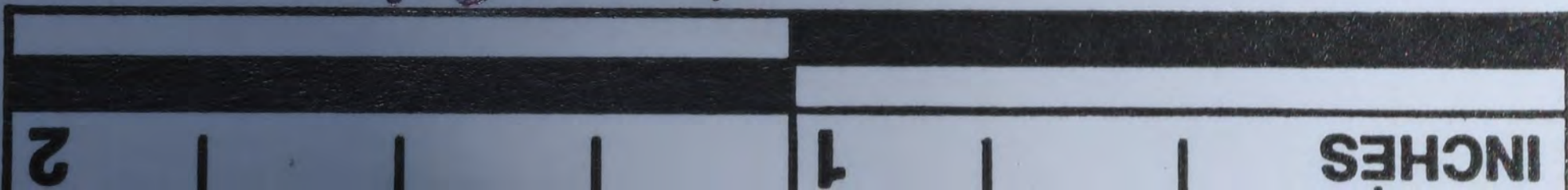






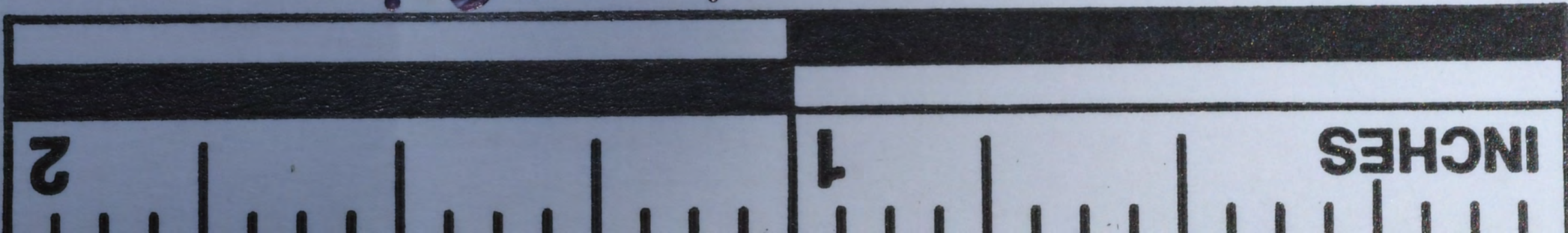


12.1





12.1









14
14





15
15
SIRCHIE

X80020S



HOT

STREAMLIGHT ProTac HL USB

S/N 200283 0721





MIRAGE

LOCK

















8

7

6

16

17

5

18

4

19

2

1

10

3

5915852/5787616

16



2
INCH

INCH

16

17



17



87

18

2 1 INCH

INCH 1 18

19



19



1

19

18

2

4

5

17

16

6

8

3

7

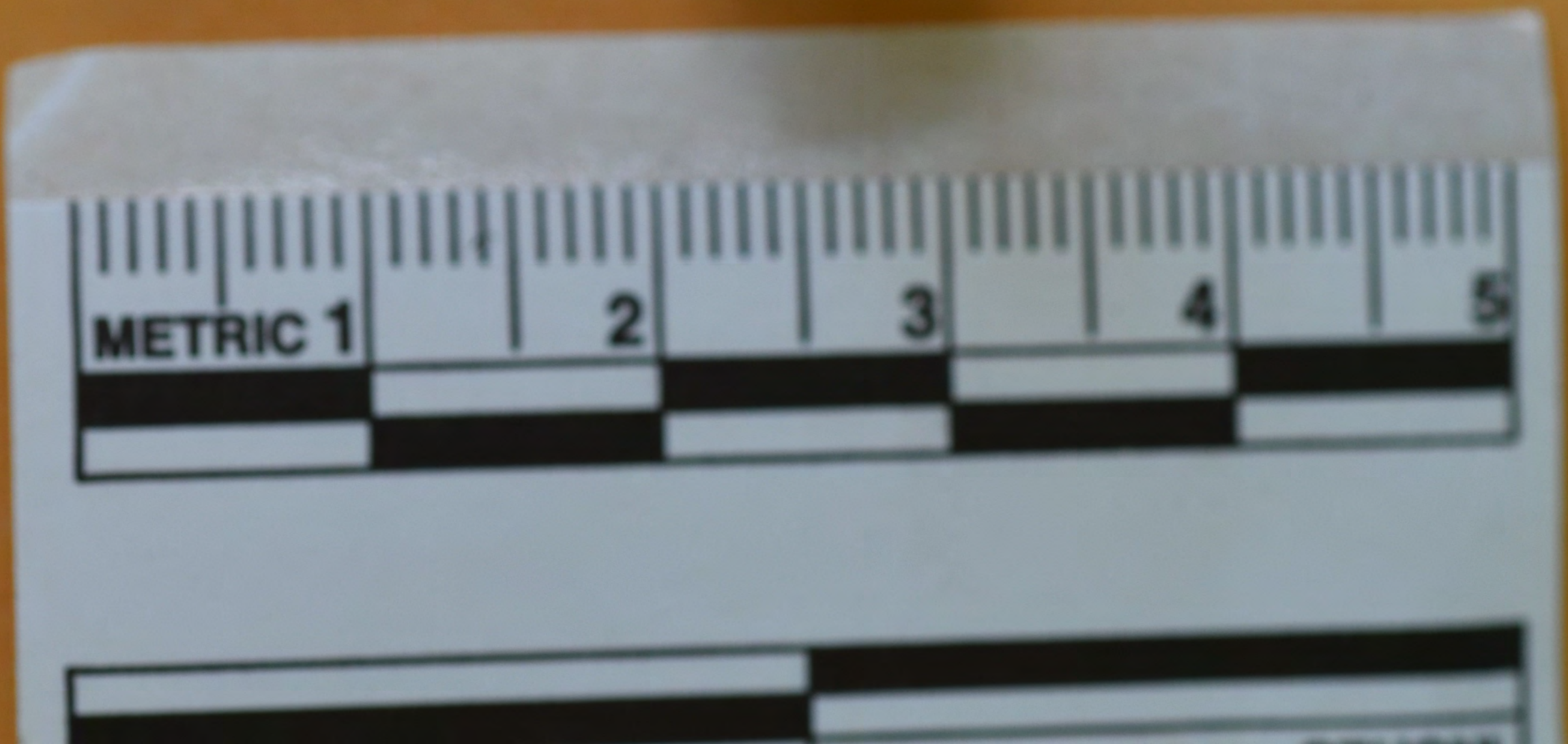
11

20





169



16.1



17





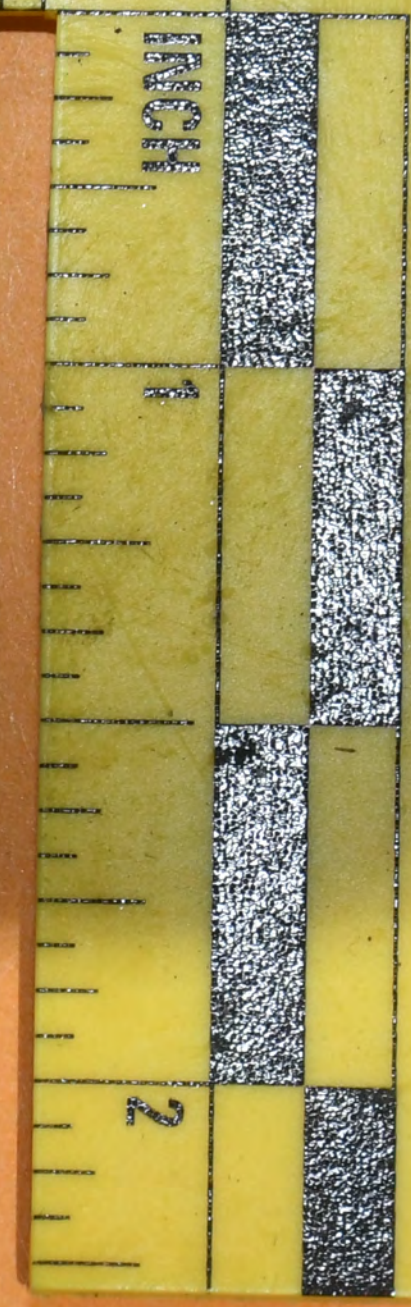
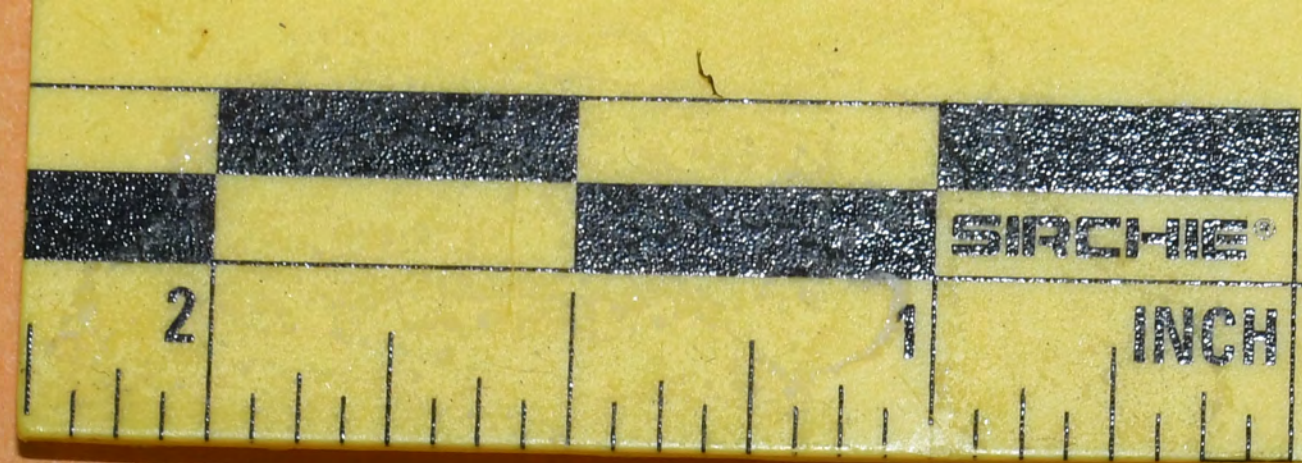
18





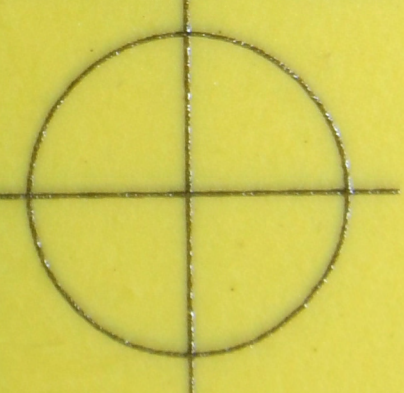
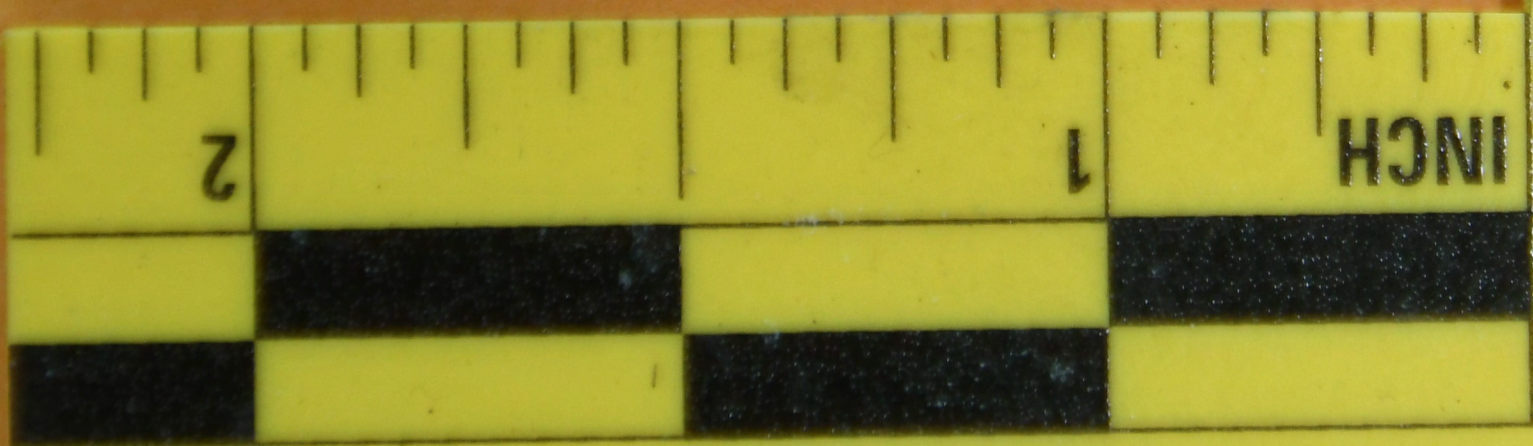
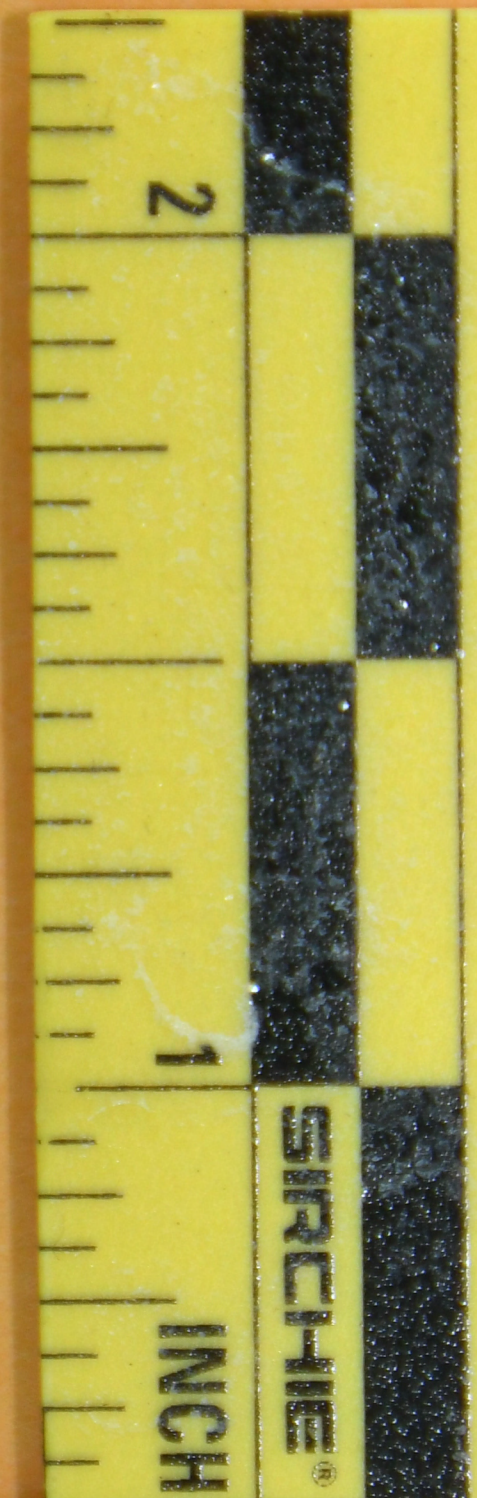
19





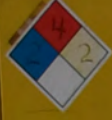
20





20

FLAMMABLE
KEEP FIRE AWAY





Ohio Attorney General
CRIME SCENE UNIT
Bureau of Criminal Investigation

Ohio Attorney General
CRIME SCENE UNIT
Bureau of Criminal Investigation

CRIME SCENE UNIT
Bureau of Criminal Investigation
CRIMINAL AGENT

AZMAI



CRIME SCENE UNIT

CRIME SCENE
Bureau of Criminal
Investigation





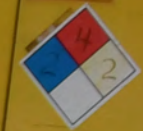


StormReady
County





FLAMMABLE
KEEP FIRE AWAY



SAAB





DMU

le 1/2/02

SABRE
LIMITED

CRIME SCENE UNIT
Texas Department of Criminal Justice

CRIME SCENE UNIT



RAY - RAY
FLO-LITE
AT
D TEMPERED
A C
476 M-AT412






TIRE - LOADING INFORMATION

				OCCUPANTS		VEHICLE CAP. WT.	
FRT.	CTR.	RR.	TOTAL	KG	LBS		
3	0	3	6	488	1076		

MAX. LOADING @ GVWR SAME AS VEHICLE CAPACITY WEIGHT.
1G4HR54K73U181320

MODEL: HR69 HAH

	TIRE SIZE	SPEED RTG	COLD TIRE PRESSURE
FRT	P225/60R16	S	210KPA(30PSI)
RR	P225/60R16	S	210KPA(30PSI)
SPA	T125/70R16	M	420KPA(60PSI)

IF TIRES ARE HOT, ADD 28KPA(4PSI).
SEE OWNER'S MANUAL  FOR MORE INFORMATION.



MFD BY GENERAL MOTORS CORP

DATE	GVWR	GAWR FRT	GAWR RR
11/02	2154 KG	1155 KG	999 KG
	4750 LB	2547 LB	2203 LB

THIS VEHICLE CONFORMS TO ALL APPLICABLE U.S. FEDERAL MOTOR VEHICLE SAFETY, BUMPER, AND THEFT PREVENTION STANDARDS IN EFFECT ON THE DATE OF MANUFACTURE SHOWN ABOVE.

1G4HR54K73U181320

TYPE: PASS CAR



TIRE - LOADING INFORMATION

OCCUPANTS				VEHICLE CAP. WT.	
FRT.	CTR.	RR.	TOTAL	KG	LBS
3	0	3	6	488	1076

MAX. LOADING @ GVWR SAME AS VEHICLE CAPACITY WEIGHT.

1G4HR54K73U181320

MODEL: HR69 HAH

	TIRE SIZE	SPEED RTG	COLD TIRE PRESSURE
FRT	P225/60R16	S	210KPA(30PSI)
RR	P225/60R16	S	210KPA(30PSI)
SPA	T125/70R16	M	420KPA(60PSI)

IF TIRES ARE HOT, ADD 28KPA(4PSI).

SEE OWNER'S MANUAL  FOR MORE INFORMATION.



MFD BY GENERAL MOTORS CORP

DATE	GVWR	GAWR FRT	GAWR RR
11/02	2154 KG 4750 LB	1155 KG 2547 LB	999 KG 2203 LB

THIS VEHICLE CONFORMS TO ALL APPLICABLE U.S. FEDERAL MOTOR VEHICLE SAFETY, BUMPER, AND THEFT PREVENTION STANDARDS IN EFFECT ON THE DATE OF MANUFACTURE SHOWN ABOVE.

1G4HR54K73U181320

TYPE: PASS CAR

FLAMMABLE
KEEP FIRE AWAY

SE-CUR-ALL CABINETS
SAFETY STORAGE CABINET
FOR FLAMMABLE LIQUIDS





Ohio Attorney General
CRIME SCENE UNIT
Bureau of Criminal Investigation

HOME LAND SECURITY
Allen
County Ohio
EMERGENCY MANAGEMENT

Ohio Attorney General
Bureau of Criminal Investigation
BCI
SPECIAL AGENT



3 4 5 6 7
RPM X 1000

ODD TRIP
RUE INFO
GAGE INFO
RESET
ENG MET

TWILIGHT
MAX
OFF
INTERIOR
LO HI

HUD
IMAGE
OFF

INC
VOL

TEMP
VOL

el Wi
octelwireless.com
877-218-5744

11578
FLAMMABLE
KEEP FIRE AWAY

BE SPECIALLY CAUTIONED
EMPTY STORAGE CABINETS
FOR FLAMMABLE LIQUIDS







ALLEN COUNTY
HAZMAT





ALLEN COOK
HAZMAT

BRE









FLAMMABLE
KEEP FIRE AWAY

Little Trees

1888

AUTO
TEMP
FAN
AIR FLOW
VENT
FRONT
REAR



607-0220-017 2294 REV A MSC

26737275
DUPA 1400
CA 2007
23900-0130

12459449 CL 8
10/02 LEAR-GRO



FACE
THIRST QUENCHER
GREEN APPLE

nicotine. Nicotine
is an addictive
chemical.

TAPE

Active Ingredient Purpose
Use
Warning
Directions
Warnings
Questions?

Oral-B
GUM



More savings happen. Every day!
DIGITAL COUPONS
Sign up or visit dg.com/coupons
and save today.

Auto King
Auto King Wash Care, LLC

GASOLINE