

MOPAR®
XI DOT1028 FVG M2040 2
43R-0112133
TRANSFORM MIN.
MADE IN USA
1888 ACOUSTIC



M
X
E
CCC



MORRIS
VI
ALL
MADE IN
CHINA

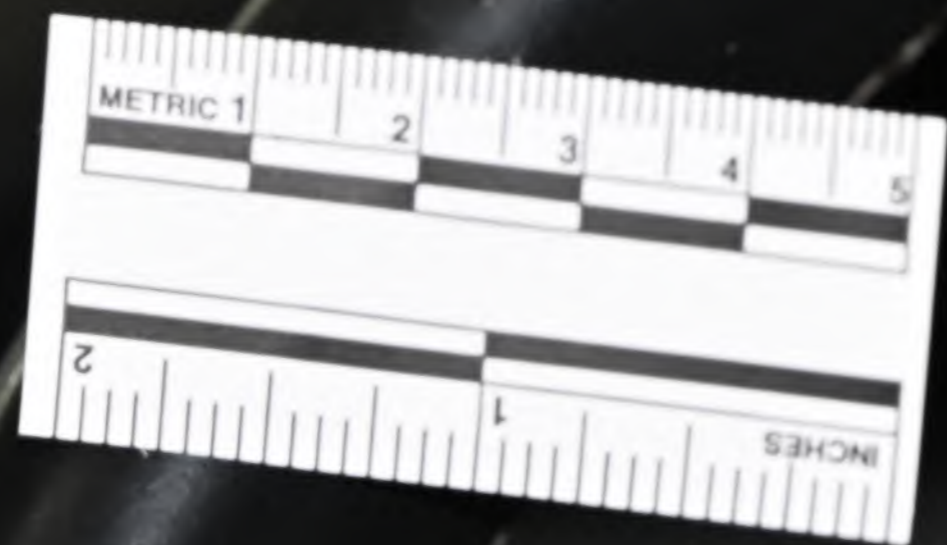


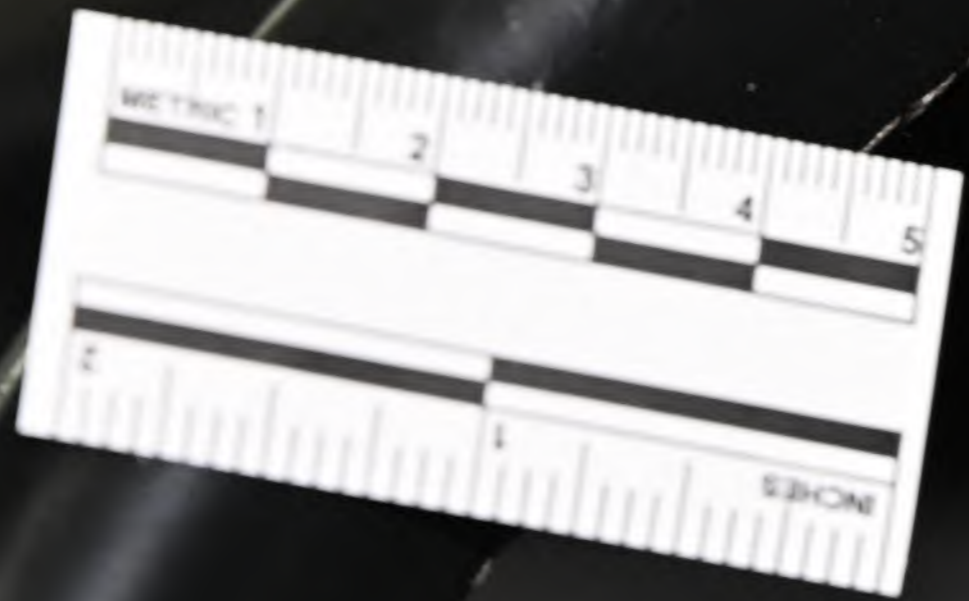






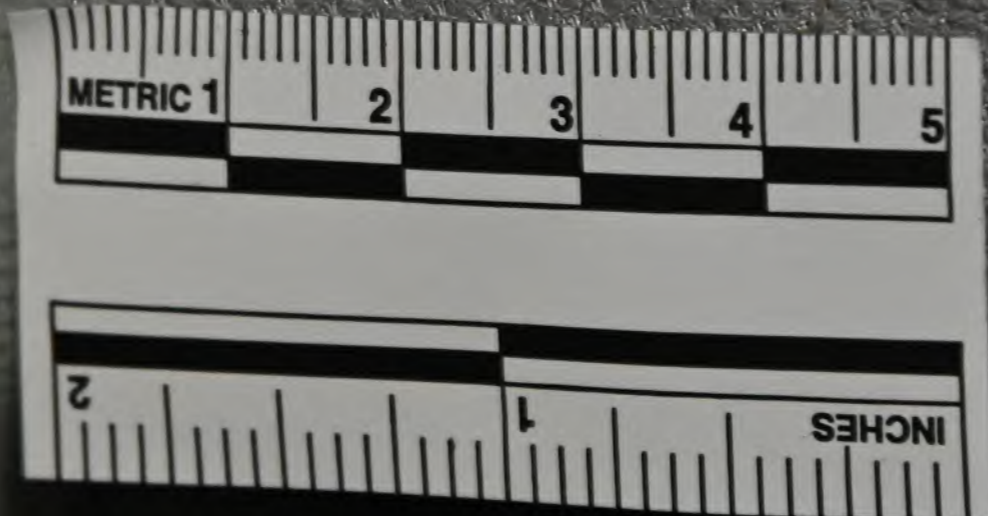


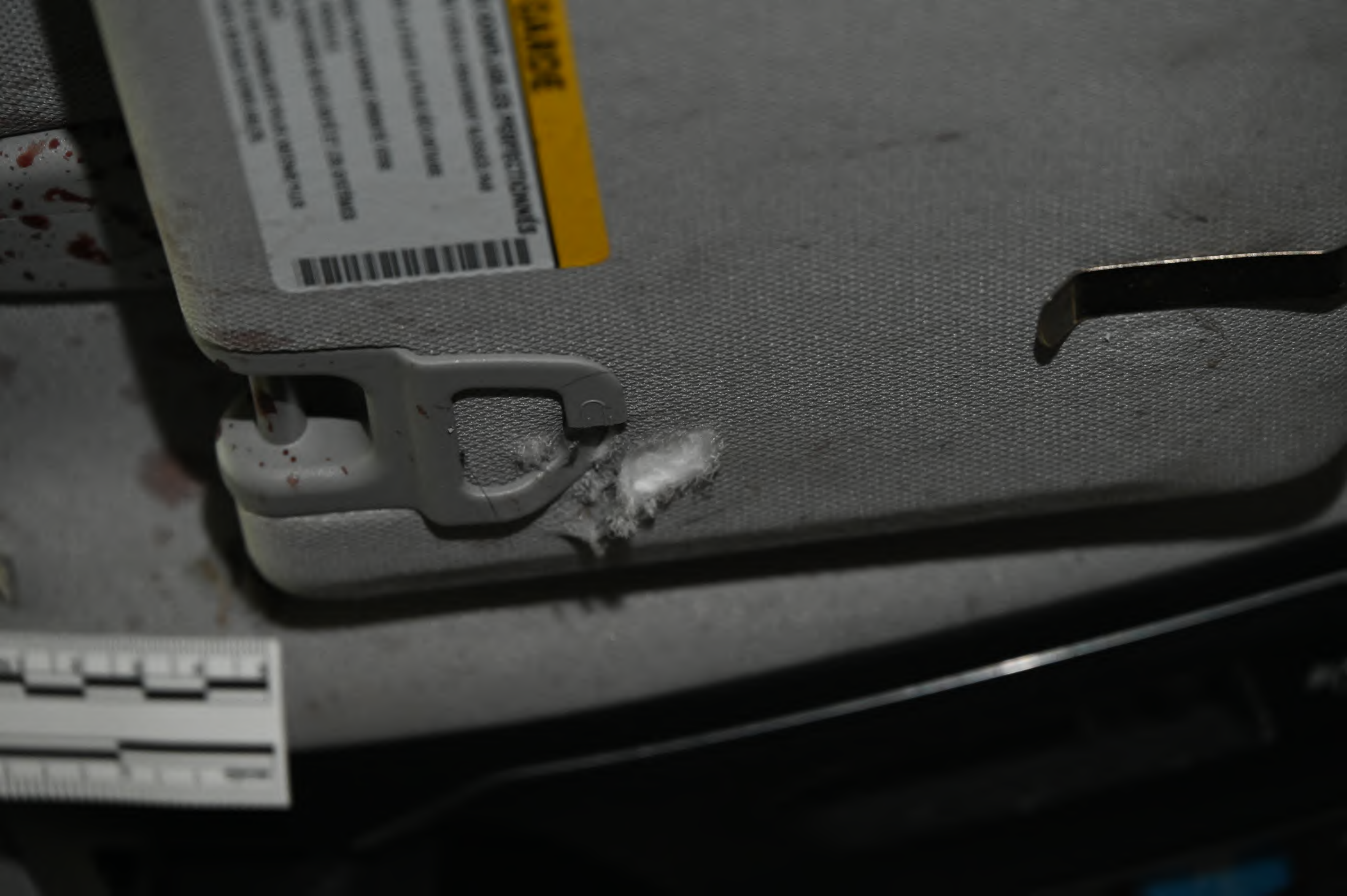






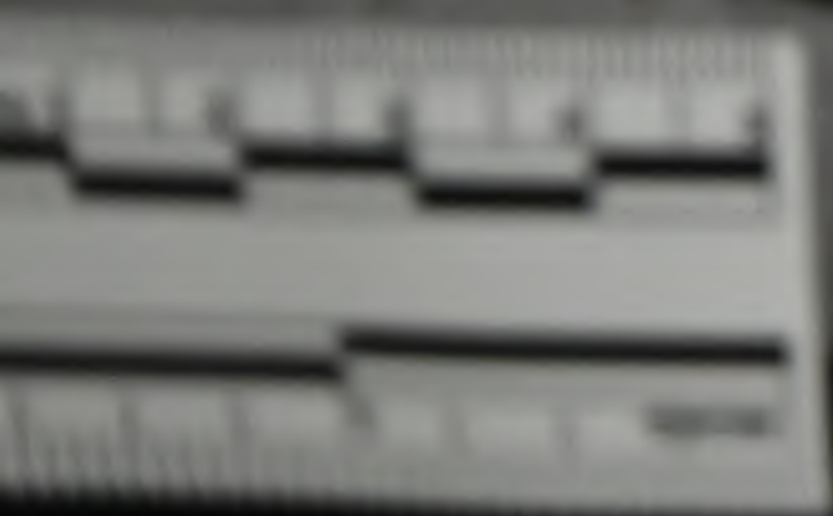
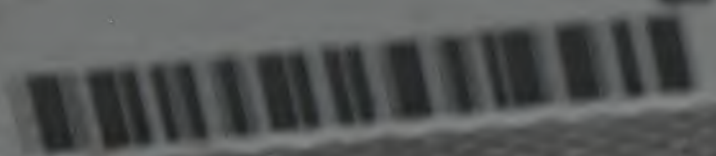


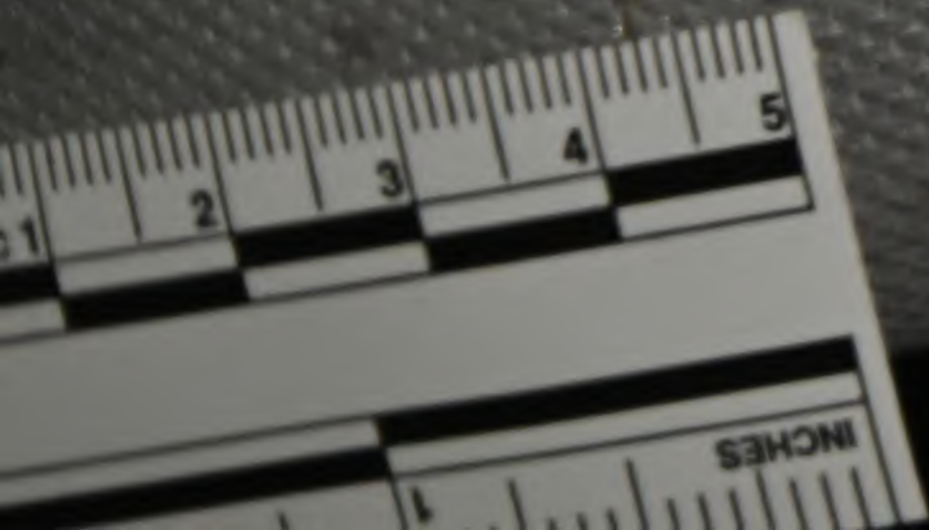
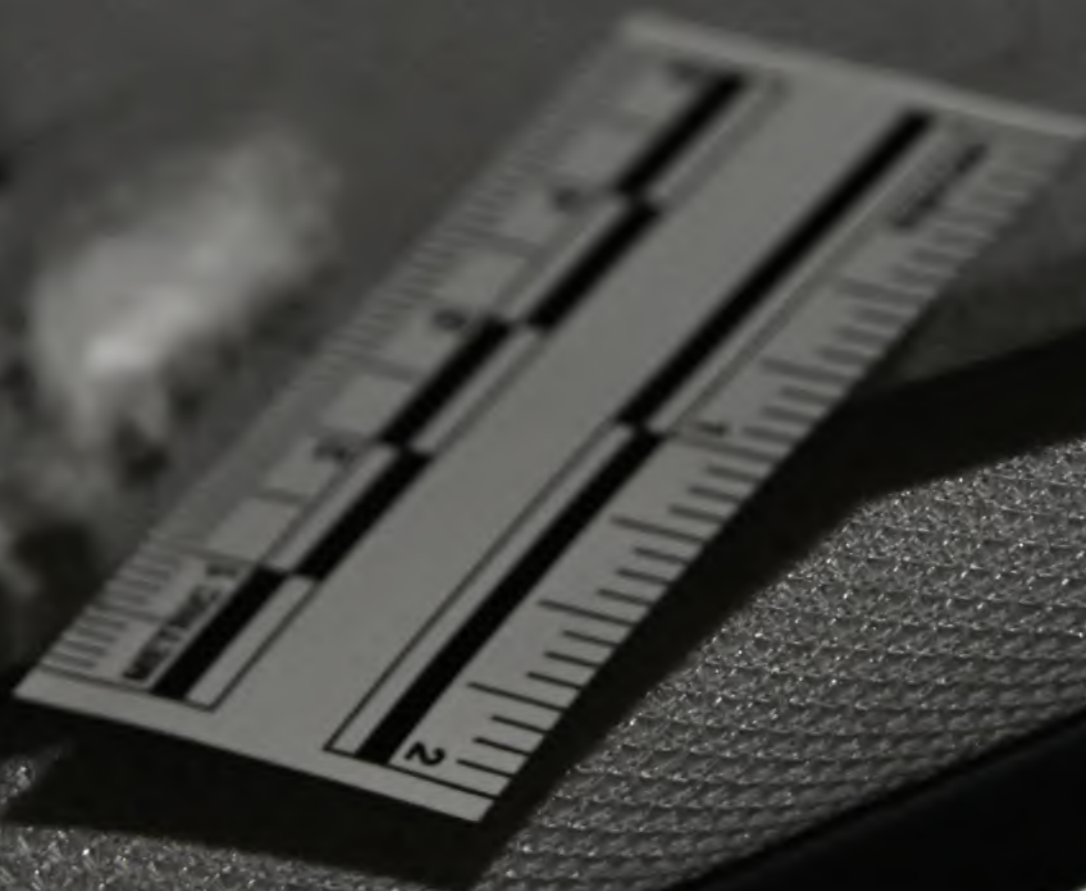


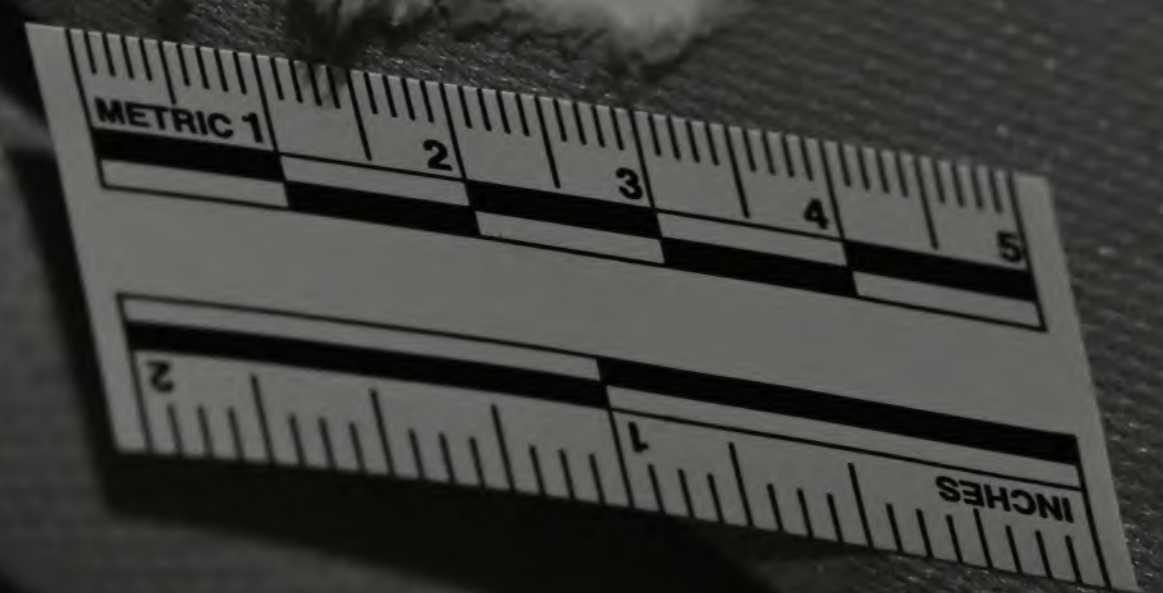
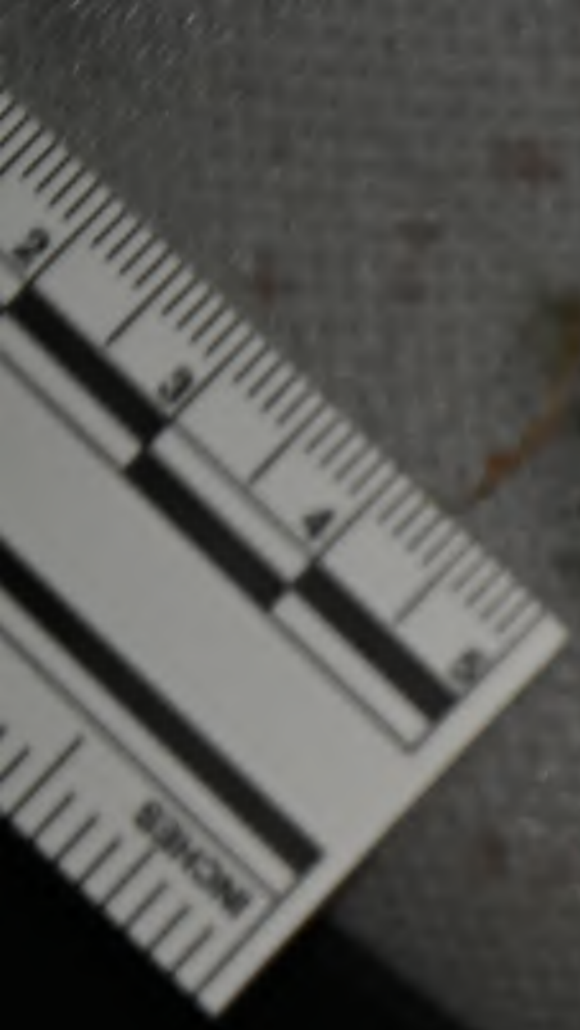


CAUTION

DO NOT OPEN THE DOOR WITHOUT WEARING PROTECTIVE GEAR
AND FOLLOWING THE SAFETY INSTRUCTIONS
FOR THE USE OF THIS EQUIPMENT
SEE THE USER MANUAL FOR MORE INFORMATION
AND SAFETY PRECAUTIONS
© 2008 [unreadable]



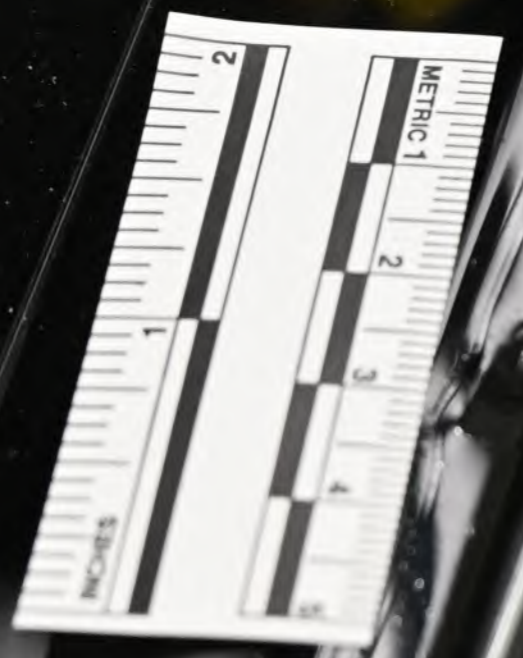




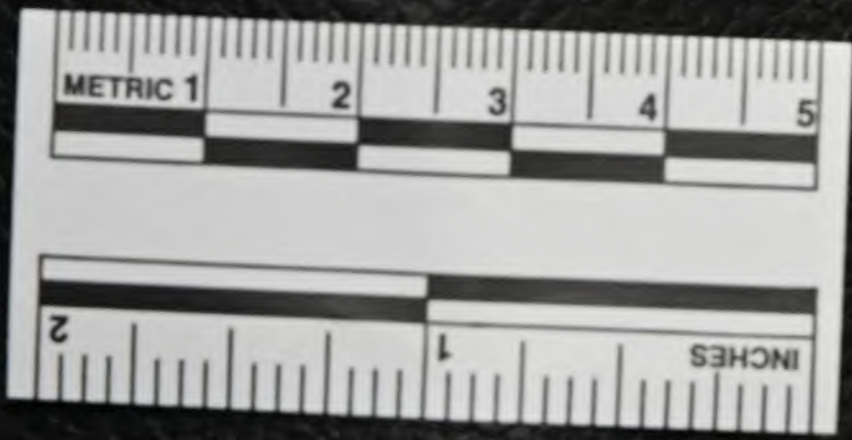




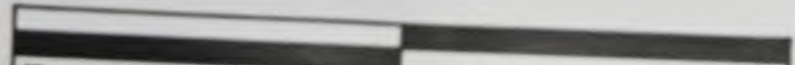








METRIC 1 2 3 4 5



INCHES 1 2







WARNING LABEL

Component	Material	Part No.
Seat	Black Fabric	123456
Seatbelt	Black Nylon	789012
Door Panel	White Plastic	345678
Floor Mat	Black Carpet	901234

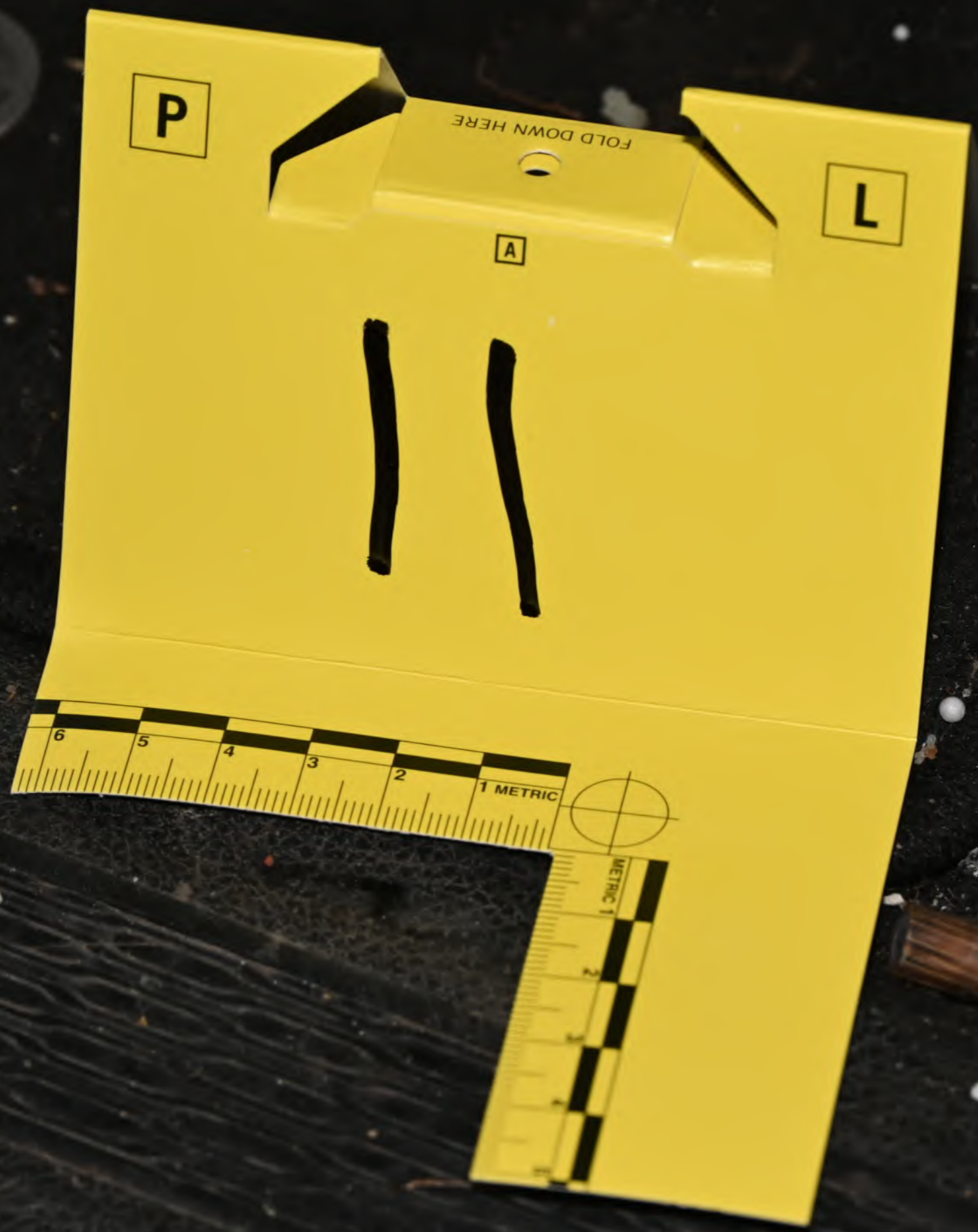
FCA



TIRE AND LOADING INFORMATION			
SEATING CAPACITY - TOTAL 6 FRONT 2 REAR 4			
THE COMBINED WEIGHT OF OCCUPANTS AND CARGO SHOULD NEVER EXCEED 544 KG OR 1200 LB			
TIRE	FRONT	REAR	SPARE

7

10



P

L

A

11

FOLD DOWN HERE

6 5 4 3 2 1 METRIC



METRIC 1





