

# Cyclone REGISTER 360 PLUS

## Registration Report



**2024-1837**

Jun 20, 2024

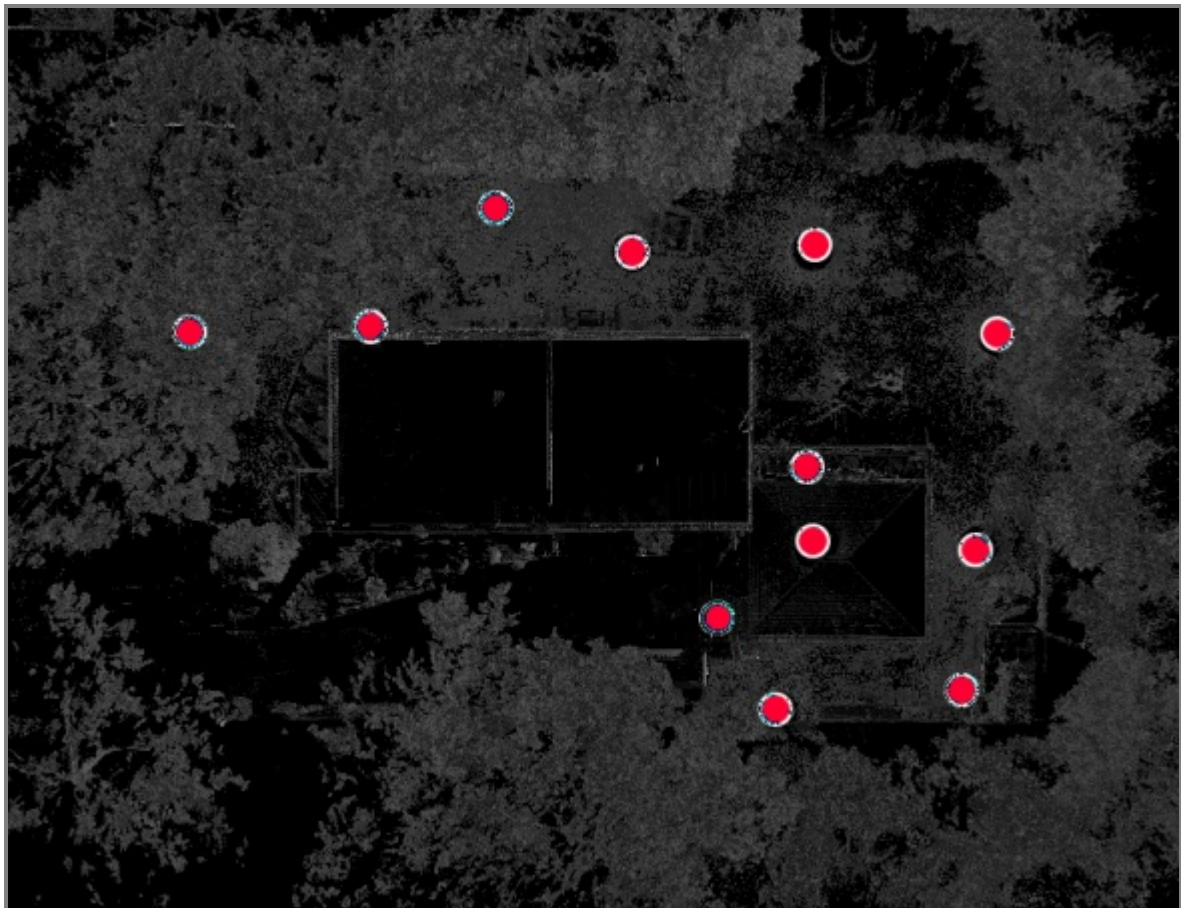
*Certified by:*

**Michael Rostocil**

Crime Scene Technician

Ohio Bureau of Criminal Investigation

Office of the Attorney General Dave Yost



2024-1857

### Overall Quality

#### Error Results for Bundle 1

Setup Count: 13  
Link Count: 12  
  
Strength: 68 %  
Overlap: 46 %


Bundle Error  
0.02 ft (US) ✓


Overlap


Strength

Global Bundle Error: --

46 % ✓	68 % ✓
Cloud-to-Cloud 0.02 ft (US) ✓	Target Error --

 Max error of 0.05 ft (US).

 Max error of 0.07 ft (US).

 Error greater than 0.07 ft (US).

# Link Error Results

## 1 Overview

Link Name	Setup 1	Setup 2	Overlap	Abs. Mean Error
Link 1	2024-1857- Setup 002	2024-1857- Setup 001	29 %	0.02 ft (US)
Link 2	2024-1857- Setup 003	2024-1857- Setup 002	37 %	0.02 ft (US)
Link 3	2024-1857- Setup 004	2024-1857- Setup 003	47 %	0.02 ft (US)
Link 4	2024-1857- Setup 005	2024-1857- Setup 004	46 %	0.02 ft (US)
Link 5	2024-1857- Setup 006	2024-1857- Setup 005	56 %	0.02 ft (US)
Link 6	2024-1857- Setup 007	2024-1857- Setup 006	30 %	0.02 ft (US)
Link 7	2024-1857- Setup 008	2024-1857- Setup 007	39 %	0.02 ft (US)
Link 8	2024-1857- Setup 009	2024-1857- Setup 008	38 %	0.02 ft (US)
Link 9	2024-1857- Setup 010	2024-1857- Setup 009	44 %	0.02 ft (US)
Link 10	2024-1857- Setup 011	2024-1857- Setup 010	78 %	0.01 ft (US)
Link 11	2024-1857- Setup 012	2024-1857- Setup 011	48 %	0.02 ft (US)
Link 12	2024-1857- Setup 013	2024-1857- Setup 012	61 %	0.02 ft (US)

## 2 Details

Link Name	Setup 1	Setup 2	Overlap	Abs. Mean Error
Link 1	2024-1857- Setup 002	2024-1857- Setup 001	29 %	0.02 ft (US)
		Cloud to Cloud		0.02 ft (US)
		Target	Mean Target Error:	--

Link Name	Setup 1	Setup 2	Overlap	Abs. Mean Error
Link 2	2024-1857- Setup 003	2024-1857- Setup 002	37 %	0.02 ft (US)
		Cloud to Cloud		0.02 ft (US)
		Target	Mean Target Error:	--

Link Name	Setup 1	Setup 2	Overlap	Abs. Mean Error
Link 3	2024-1857- Setup 004	2024-1857- Setup 003	47 %	0.02 ft (US)
		Cloud to Cloud Target	Mean Target Error:	0.02 ft (US) --

Link Name	Setup 1	Setup 2	Overlap	Abs. Mean Error
Link 4	2024-1857- Setup 005	2024-1857- Setup 004	46 %	0.02 ft (US)
		Cloud to Cloud Target	Mean Target Error:	0.02 ft (US) --

Link Name	Setup 1	Setup 2	Overlap	Abs. Mean Error
Link 5	2024-1857- Setup 006	2024-1857- Setup 005	56 %	0.02 ft (US)
		Cloud to Cloud Target	Mean Target Error:	0.02 ft (US) --

Link Name	Setup 1	Setup 2	Overlap	Abs. Mean Error
Link 6	2024-1857- Setup 007	2024-1857- Setup 006	30 %	0.02 ft (US)
		Cloud to Cloud Target	Mean Target Error:	0.02 ft (US) --

Link Name	Setup 1	Setup 2	Overlap	Abs. Mean Error
Link 7	2024-1857- Setup 008	2024-1857- Setup 007	39 %	0.02 ft (US)
		Cloud to Cloud Target	Mean Target Error:	0.02 ft (US) --

Link Name	Setup 1	Setup 2	Overlap	Abs. Mean Error
Link 8	2024-1857- Setup 009	2024-1857- Setup 008	38 %	0.02 ft (US)
		Cloud to Cloud Target	Mean Target Error:	0.02 ft (US) --

Link Name	Setup 1	Setup 2	Overlap	Abs. Mean Error
Link 9	2024-1857- Setup 010	2024-1857- Setup 009	44 %	0.02 ft (US)
		Cloud to Cloud Target	Mean Target Error:	0.02 ft (US) --

Link Name	Setup 1	Setup 2	Overlap	Abs. Mean Error
Link 10	2024-1857- Setup 011	2024-1857- Setup 010	78 %	0.01 ft (US)
		Cloud to Cloud Target	Mean Target Error:	0.01 ft (US) --

Link Name	Setup 1	Setup 2	Overlap	Abs. Mean Error
Link 11	2024-1857- Setup 012	2024-1857- Setup 011	48 %	0.02 ft (US)
		Cloud to Cloud Target	Mean Target Error:	0.02 ft (US) --

Link Name	Setup 1	Setup 2	Overlap	Abs. Mean Error
Link 12	2024-1857- Setup 013	2024-1857- Setup 012	61 %	0.02 ft (US)
		Cloud to Cloud Target	Mean Target Error:	0.02 ft (US) --