

Cyclone REGISTER 360 PLUS Registration Report



2023-2730

Oct 13, 2023

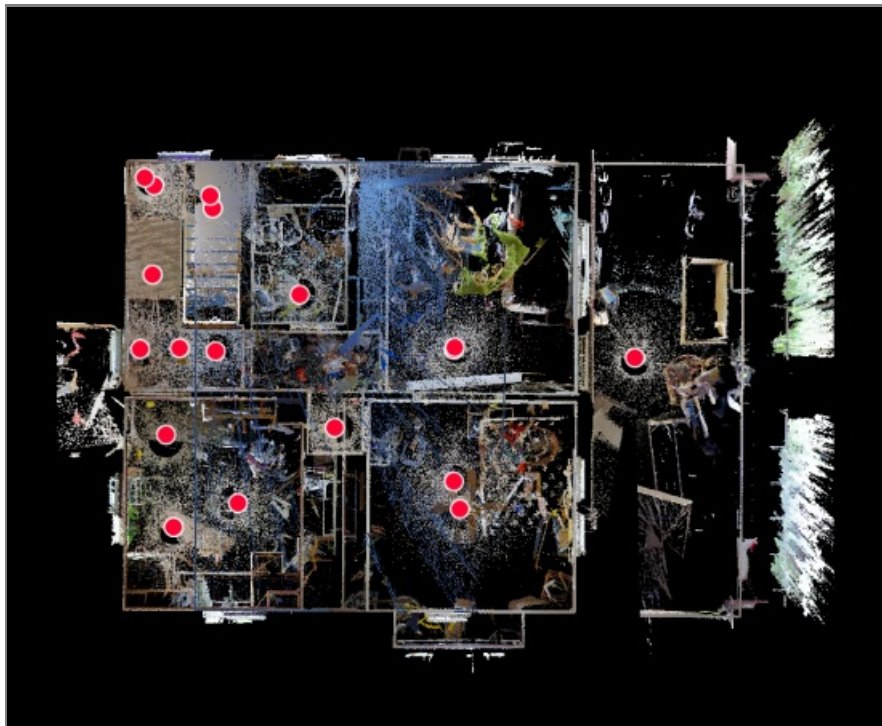
Certified by:

Michael Rostocil

Crime Scene Technician

Ohio Bureau of Criminal Investigation

Office of Ohio Attorney General Dave Yost



Youngstown OICI

Overall Quality

Error Results for Bundle 1

Setup Count: 18
Link Count: 17

Strength: 87 %
Overlap: 44 %

| | |
|----------------------------------|--------------------|
| Bundle Error 0.00 ft (US) ✓ | |
| Overlap 44 % ✓ | Strength 87 % ✓ |
| Cloud-to-Cloud 0.00 ft (US) ✓ | Target Error -- |

■ Max error of 0.05 ft (US).

■ Max error of 0.07 ft (US).

■ Error greater than 0.07 ft (US).

Link Error Results

1 Overview

| Link Name | Setup 1 | Setup 2 | Overlap | Abs. Mean Error |
|-----------|----------------------------|----------------------------|---------|-----------------|
| Link 1 | Youngstown OICI- Setup 001 | Youngstown OICI- Setup 002 | 33 % | 0.00 ft (US) |
| Link 2 | Youngstown OICI- Setup 002 | Youngstown OICI- Setup 003 | 66 % | 0.00 ft (US) |
| Link 11 | Youngstown OICI- Setup 004 | Youngstown OICI- Setup 003 | 39 % | 0.00 ft (US) |
| Link 12 | Youngstown OICI- Setup 005 | Youngstown OICI- Setup 004 | 68 % | 0.00 ft (US) |
| Link 13 | Youngstown OICI- Setup 006 | Youngstown OICI- Setup 005 | 51 % | 0.00 ft (US) |
| Link 3 | Youngstown OICI- Setup 006 | Youngstown OICI- Setup 007 | 23 % | 0.00 ft (US) |
| Link 14 | Youngstown OICI- Setup 008 | Youngstown OICI- Setup 007 | 17 % | 0.00 ft (US) |
| Link 4 | Youngstown OICI- Setup 008 | Youngstown OICI- Setup 009 | 31 % | 0.00 ft (US) |
| Link 5 | Youngstown OICI- Setup 009 | Youngstown OICI- Setup 010 | 54 % | 0.00 ft (US) |
| Link 6 | Youngstown OICI- Setup 009 | Youngstown OICI- Setup 011 | 64 % | 0.00 ft (US) |
| Link 7 | Youngstown OICI- Setup 011 | Youngstown OICI- Setup 014 | 47 % | 0.00 ft (US) |
| Link 15 | Youngstown OICI- Setup 012 | Youngstown OICI- Setup 011 | 16 % | 0.01 ft (US) |
| Link 8 | Youngstown OICI- Setup 012 | Youngstown OICI- Setup 013 | 52 % | 0.00 ft (US) |
| Link 9 | Youngstown OICI- Setup 012 | Youngstown OICI- Setup 015 | 34 % | 0.00 ft (US) |
| Link 16 | Youngstown OICI- Setup 016 | Youngstown OICI- Setup 011 | 17 % | 0.01 ft (US) |
| Link 17 | Youngstown OICI- Setup 017 | Youngstown OICI- Setup 006 | 78 % | 0.00 ft (US) |
| Link 10 | Youngstown OICI- Setup 017 | Youngstown OICI- Setup 018 | 58 % | 0.00 ft (US) |

2 Details

| Link Name | Setup 1 | Setup 2 | Overlap | Abs. Mean Error |
|-----------|----------------------------|----------------------------|--------------------|-----------------|
| Link 1 | Youngstown OICI- Setup 001 | Youngstown OICI- Setup 002 | 33 % | 0.00 ft (US) |
| | | Cloud to Cloud | | 0.00 ft (US) |
| | | Target | Mean Target Error: | -- |

| Link Name | Setup 1 | Setup 2 | Overlap | Abs. Mean Error |
|-----------|----------------------------|----------------------------|--------------------|-----------------|
| Link 2 | Youngstown OICI- Setup 002 | Youngstown OICI- Setup 003 | 66 % | 0.00 ft (US) |
| | | Cloud to Cloud | | 0.00 ft (US) |
| | | Target | Mean Target Error: | -- |

| Link Name | Setup 1 | Setup 2 | Overlap | Abs. Mean Error |
|-----------|----------------------------|----------------------------|--------------------|-----------------|
| Link 11 | Youngstown OICI- Setup 004 | Youngstown OICI- Setup 003 | 39 % | 0.00 ft (US) |
| | | Cloud to Cloud | | 0.00 ft (US) |
| | | Target | Mean Target Error: | -- |

| Link Name | Setup 1 | Setup 2 | Overlap | Abs. Mean Error |
|-----------|----------------------------|----------------------------|--------------------|--------------------|
| Link 12 | Youngstown OICI- Setup 005 | Youngstown OICI- Setup 004 | 68 % | 0.00 ft (US) |
| | | Cloud to Cloud Target | Mean Target Error: | 0.00 ft (US) -- |

| Link Name | Setup 1 | Setup 2 | Overlap | Abs. Mean Error |
|-----------|----------------------------|----------------------------|--------------------|--------------------|
| Link 13 | Youngstown OICI- Setup 006 | Youngstown OICI- Setup 005 | 51 % | 0.00 ft (US) |
| | | Cloud to Cloud Target | Mean Target Error: | 0.00 ft (US) -- |

| Link Name | Setup 1 | Setup 2 | Overlap | Abs. Mean Error |
|-----------|----------------------------|----------------------------|--------------------|--------------------|
| Link 3 | Youngstown OICI- Setup 006 | Youngstown OICI- Setup 007 | 23 % | 0.00 ft (US) |
| | | Cloud to Cloud Target | Mean Target Error: | 0.00 ft (US) -- |

| Link Name | Setup 1 | Setup 2 | Overlap | Abs. Mean Error |
|-----------|----------------------------|----------------------------|--------------------|--------------------|
| Link 14 | Youngstown OICI- Setup 008 | Youngstown OICI- Setup 007 | 17 % | 0.00 ft (US) |
| | | Cloud to Cloud Target | Mean Target Error: | 0.00 ft (US) -- |

| Link Name | Setup 1 | Setup 2 | Overlap | Abs. Mean Error |
|-----------|----------------------------|----------------------------|--------------------|--------------------|
| Link 4 | Youngstown OICI- Setup 008 | Youngstown OICI- Setup 009 | 31 % | 0.00 ft (US) |
| | | Cloud to Cloud Target | Mean Target Error: | 0.00 ft (US) -- |

| Link Name | Setup 1 | Setup 2 | Overlap | Abs. Mean Error |
|-----------|----------------------------|----------------------------|--------------------|--------------------|
| Link 5 | Youngstown OICI- Setup 009 | Youngstown OICI- Setup 010 | 54 % | 0.00 ft (US) |
| | | Cloud to Cloud Target | Mean Target Error: | 0.00 ft (US) -- |

| Link Name | Setup 1 | Setup 2 | Overlap | Abs. Mean Error |
|-----------|----------------------------|----------------------------|--------------------|--------------------|
| Link 6 | Youngstown OICI- Setup 009 | Youngstown OICI- Setup 011 | 64 % | 0.00 ft (US) |
| | | Cloud to Cloud Target | Mean Target Error: | 0.00 ft (US) -- |

| Link Name | Setup 1 | Setup 2 | Overlap | Abs. Mean Error |
|-----------|----------------------------|----------------------------|--------------------|--------------------|
| Link 7 | Youngstown OICI- Setup 011 | Youngstown OICI- Setup 014 | 47 % | 0.00 ft (US) |
| | | Cloud to Cloud Target | Mean Target Error: | 0.00 ft (US) -- |

| Link Name | Setup 1 | Setup 2 | Overlap | Abs. Mean Error |
|-----------|----------------------------|----------------------------|--------------------|--------------------|
| Link 15 | Youngstown OICI- Setup 012 | Youngstown OICI- Setup 011 | 16 % | 0.01 ft (US) |
| | | Cloud to Cloud Target | Mean Target Error: | 0.01 ft (US) -- |

| Link Name | Setup 1 | Setup 2 | Overlap | Abs. Mean Error |
|-----------|----------------------------|----------------------------|--------------------|--------------------|
| Link 8 | Youngstown OICI- Setup 012 | Youngstown OICI- Setup 013 | 52 % | 0.00 ft (US) |
| | | Cloud to Cloud Target | Mean Target Error: | 0.00 ft (US) -- |

| Link Name | Setup 1 | Setup 2 | Overlap | Abs. Mean Error |
|-----------|----------------------------|----------------------------|--------------------|--------------------|
| Link 9 | Youngstown OICI- Setup 012 | Youngstown OICI- Setup 015 | 34 % | 0.00 ft (US) |
| | | Cloud to Cloud Target | Mean Target Error: | 0.00 ft (US) -- |

| Link Name | Setup 1 | Setup 2 | Overlap | Abs. Mean Error |
|-----------|----------------------------|----------------------------|--------------------|--------------------|
| Link 16 | Youngstown OICI- Setup 016 | Youngstown OICI- Setup 011 | 17 % | 0.01 ft (US) |
| | | Cloud to Cloud Target | Mean Target Error: | 0.01 ft (US) -- |

| Link Name | Setup 1 | Setup 2 | Overlap | Abs. Mean Error |
|-----------|----------------------------|----------------------------|--------------------|-----------------|
| Link 17 | Youngstown OICI- Setup 017 | Youngstown OICI- Setup 006 | 78 % | 0.00 ft (US) |
| | | Cloud to Cloud | | 0.00 ft (US) |
| | | Target | Mean Target Error: | -- |

| Link Name | Setup 1 | Setup 2 | Overlap | Abs. Mean Error |
|-----------|----------------------------|----------------------------|--------------------|-----------------|
| Link 10 | Youngstown OICI- Setup 017 | Youngstown OICI- Setup 018 | 58 % | 0.00 ft (US) |
| | | Cloud to Cloud | | 0.00 ft (US) |
| | | Target | Mean Target Error: | -- |